

TASMANIAN STATISTICAL INDICATORS

EMBARGO: 11:30AM (CANBERRA TIME) TUES 8 AUG 2000

C O N T E N T S

	<i>page</i>
Notes	2
Main features	3
List of tables.	8

SUBJECT AREAS

1 Population and demography	9
2 Labour force	10
3 Wages and prices	18
4 Production	24
5 Primary industry	25
6 Building	29
7 Finance	30
8 Tourism	32
9 Transport	34
10 Retail trade.	35
11 Overseas trade	36
12 Australia and State comparisons.	38
13 Tasmanian Statistical Divisions comparisons.	40

ADDITIONAL INFORMATION

Map: Tasmanian Statistical Divisions.	42
---	----

- For further information about these and related statistics, contact the National Information Service on 1300 135 070 or Wally Van Schie on Hobart 03 6222 5812.

NOTES

FORTHCOMING ISSUES

<i>ISSUE</i>	<i>RELEASE DATE</i>
September 2000	8 September 2000
October 2000	9 October 2000
November 2000	8 November 2000
December 2000	8 December 2000
January 2001	10 January 2001
February 2001	11 February 2001

INTRODUCTION

1 This publication contains latest figures for a comprehensive range of economic indicators. Statistics shown in this publication are the latest available at the date of preparation and may be subject to revision in subsequent issues. In a number of cases figures appearing in this publication are preliminary and are subject to revision in subsequent issues. Reference should therefore always be made to the latest issue or to the statistical publication on the specific subject.

SEASONAL ADJUSTMENT AND TREND ESTIMATION

2 Seasonal adjustment is a means of removing the estimated effects of normal seasonal variation from the series so that the effects of other influences on the series can be more clearly recognised. Seasonal adjustment does not aim to remove the irregular or non-seasonal influences which may be present in any particular month. This means that month-to-month movements of the seasonally adjusted estimates may not be reliable indicators of trend behaviour.

3 The smoothing of seasonally adjusted series reduces the impact of the irregular components of the seasonally adjusted series and creates trend estimates. These trend estimates are derived by applying a 13-term Henderson-weighted moving average to all months except the last six. The last six monthly trend estimates are obtained by applying surrogates of the Henderson average to the seasonally adjusted series.

4 While this smoothing technique enables estimates to be produced for the latest month, it does result in revisions to the most recent months as additional observations become available. Generally, subsequent revisions become smaller and after 3 months have a negligible impact on the series.

SYMBOLS AND OTHER USAGES

n.a.	not available
n.p.	not available for separate publication (but included in totals where applicable)
n.y.a.	not yet available
. .	not applicable
—	nil or rounded to zero
p	preliminary—figure or series subject to revision
r	figure or series revised since previous issue

Stevan R. Matheson
Regional Director, Tasmania

MAIN FEATURES

THE LABOUR FORCE

Trend estimates There were an estimated 219,500 persons (based on trend estimates) in the labour force in June 2000 and an estimated 370,800 civilian Tasmanians aged 15 years or more, yielding a labour force participation rate of 59.2%. This compares with 58.5% in June 1999. The Australian labour force participation rate for June 2000 was 63.7%. This compares with 63.1% in June 1999 (see table 39 and *Labour Force, Australia, Preliminary* (Cat. no. 6202.0)).

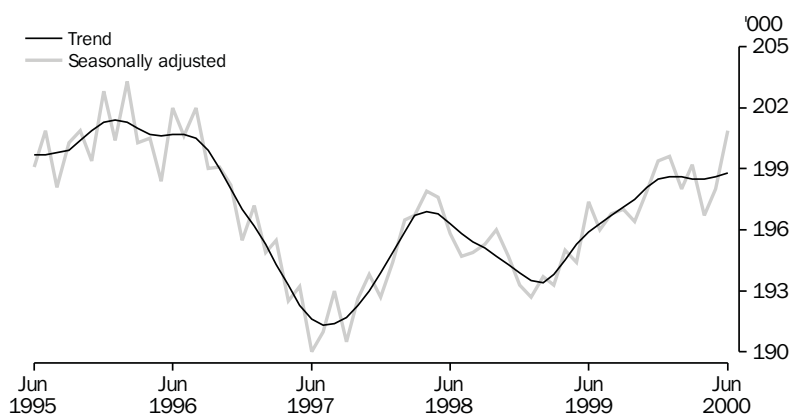
For Tasmanian males, the trend estimate of the participation rate was 67.5%, compared with 68.5% in June 1999. For Tasmanian females, the trend estimate of the participation rate was 51.4%, compared with 49.1% in June 1999 (see table 3).

EMPLOYMENT

State comparisons There was an increase of 1.5% in Tasmania's employment over the 12 months to June 2000. The largest percentage increase in employment was in New South Wales (4.3%), followed by Victoria (3.0%), Western Australia (2.8%), Queensland (2.3%) and South Australia (1.7%). The increase in Australia's employment over the same period was 3.1% (see table 39 and *Labour Force, Australia, Preliminary* (Cat. no. 6202.0)).

Trend estimates

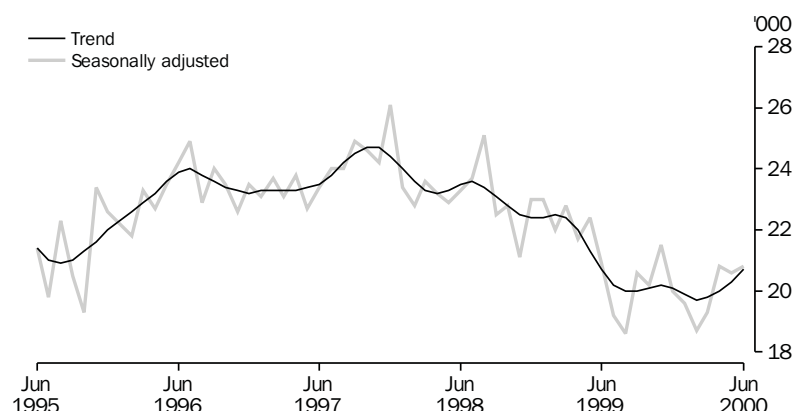
EMPLOYMENT



UNEMPLOYMENT

Trend estimates The trend estimate of the number of unemployed persons in Tasmania for June 2000 was 20,700. This compares with 20,700 in June 1999. The trend estimate of the unemployment rate of 9.4% in June 2000 compares with 9.5% in June 1999. The Australian trend estimate of the unemployment rate of 6.7% in June 2000 compares with 7.3% in June 1999 (see table 3 and 39, and *Labour Force, Australia, Preliminary* (Cat. no. 6202.0)).

UNEMPLOYMENT



LIVESTOCK SLAUGHTERING

Trend estimates Monthly movements of trend estimates showed only slight movement in the three livestock slaughtering series with cattle and calves down by 1.6%, sheep and lambs up by 0.5% and pigs down by 0.8%.

In May 2000, the trend estimate of the number of cattle and calves slaughtered was 22,500. This was down 2.8% on the number for May 1999, and down 4.8% on the number for May 1998.

The trend estimate for the slaughtering of sheep and lambs was 84,900 in May 2000. This was 7.2% more than for May 1999, and 19.7% above the number for May 1998.

The trend estimate of 5,500 pigs slaughtered in May 2000 was 20.6% less than for May 1999 and 16.3% less than the trend estimate for May 1998 (see table 21).

BUILDING APPROVALS

Original terms There were 238 dwelling units approved during May 2000, of which 164 were new houses, 45 were new other residential building and 29 were conversions. The number of dwelling units approved during May was 73.7% above the revised April 2000 figure of 137, and 150.5% above the May 1999 figure of 95.

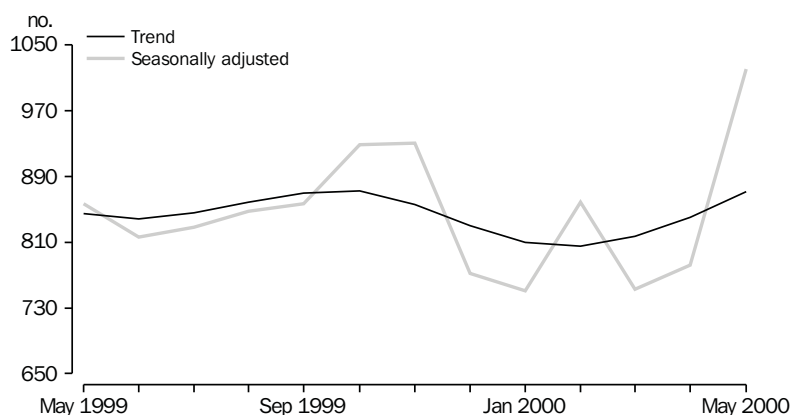
At current prices, the value of total building was \$51.6 million in May 2000. This was 100.0% above the revised April 2000 figure of \$25.8 million and 142.3% above the May 1999 figure of \$21.3 million. Residential building contributed \$34.5 million and non-residential building \$17.1 million in May 2000 (see table 27 and *Building Approvals, Australia* (Cat. no. 8731.0)).

HOUSING FINANCE

Trend estimates

In Tasmania, due to a dramatic increase in the original and seasonally adjusted data, the trend estimate of the number of secured housing finance commitments entered into in Tasmania in May 2000 increased to 871 dwellings, from the previous month's 840 dwellings. All other States continued to decline except for the Northern Territory which has been flat for the past three months. While nationally the trend continues to be downward, it slowed in May 2000. Nationally, the total number of secured housing commitments entered into in May 2000 was 43,206, a decrease from the previous month's figure of 43,845.

HOUSING FINANCE, TASMANIA, Number of dwellings



The total value of commitments for Tasmania in May 2000 was \$70 million, higher than the previous months \$69 million but lower than May 1999 figure of \$71 million. Nationally, the value of these commitments decreased between April and May 2000 from \$6,111 million to \$6,007 million. (see table 28 and *Housing Finance for Owner Occupation, Australia* (Cat. no. 5609.0)).

GOVERNMENT FINANCE STATISTICS

Government Finance Statistics, Australia, 1998–99 (Cat. no. 5512.0) released on 12 July 2000 presents government finance statistics (GFS) for the 1998–99 financial year. At Commonwealth, State and Territory levels, data is presented for the general government (GG), public non-financial corporations (PNFC) and public financial corporations (PFC) sectors. Tables include expenses by purpose, operating, cash flow statements and balance sheet data, presented for all sectors, as well as University and local government sectors.

For 1998–99 the GFS net operating balance (NOB) for the total public sector, all Australian governments combined, was \$8,687 million. The GFS NOB for the Commonwealth government was \$4,997 million while the States was \$3,033 million. The GFS Net Borrowing for the total consolidated public sector for all Australian governments combined was \$324 million in 1998–99, with State governments the only level of government Net Borrowing \$1,360 million.

GOVERNMENT FINANCE
STATISTICS *continued*

The Tasmanian consolidated State and local government sector GFS NOB was –\$11 million. South Australia, Northern Territory and the ACT also reported negative NOBs. Total Australian State and local governments returned a NOB of \$4,243 million. Tasmanian PNFCs returned a –\$20 million NOB, the general government sector a \$23 million NOB and the PFCs a –\$2 million NOB. Net borrowing for Tasmanian State and local governments was \$7 million. Source: *Government Finance Statistics Australia, 1998–99* (Cat. no. 5512.0).

NEW MOTOR VEHICLE
REGISTRATIONS

Original terms There were 1126 new motor vehicles (excluding motorcycles) registered in Tasmania during May 2000. This was 20.2% above the 937 registered in April 2000 and 1.2% above the May 1999 figure of 1113. Of the new motor vehicles (excluding motorcycles) registered in May 2000 in Tasmania, 3 were vehicles registered by vehicle rental businesses, compared with 19 registered by vehicle rental businesses in April 2000 and 2 in May 1999 (see table 34).

RETAIL

Original terms In original terms, the estimate of retail turnover in Australia for May 2000 was \$11,960.7 million, 3.5% above the figure recorded in May 1999. In original terms, the estimate of retail turnover in Tasmania for May 2000 was \$258.2 million, the same figure recorded in May 1999.

Trend estimates In trend terms, the estimate of retail turnover in Australia for May 2000 was \$12,172.9 million, 2.2% above the figure recorded in May 1999. In trend terms, the estimate of retail turnover in Tasmania for May 2000 was \$267.7 million, 1.5% below the figure recorded in May 1999. The Tasmanian trend estimate has fallen for the past 7 months. In May 2000, Food, Hospitality/services, Clothing and Recreational goods were in decline. Growth in Household goods was strong (see table 35 and *Retail Trade, Australia* (Cat. no. 8501.0)).

OVERSEAS TRADE

The total value of Tasmania's overseas exports for the 1998–99 financial year was \$2,019 million. This contributed 2.3% to the Australian total of \$85,991 million.

The value of Tasmania's exports for the month of May 2000 was \$284 million, an increase of 65% over the month of April. Australia's exports for May totalled \$9,166 million, an increase of 11% over the April figure.

Tasmania's major export destinations for the month of May 2000 were Spain (\$65.0m), Japan (\$52.7m), Taiwan (\$29.3m) and United States of America (\$21.1m). Major commodity groups exported for the month were road vehicles and transport equipment (\$64.9m), non-ferrous metals (\$63.6m), and wood and woodchips (\$32.0m). For the financial year 1998–99, major commodity groups exported were non-ferrous metals (\$544.3m), wood and woodchips (\$296.2m) and metallic ores and metal scrap (\$278.0m).

ENGINEERING
CONSTRUCTION ACTIVITY

Original terms In original terms, the value of engineering construction work done in Tasmania during the March quarter 2000 was \$67.0 million, 27.1% above that done in the December quarter 1999 and 3.0% below that done in the March quarter 1999. The value of work done by the public sector during the period was \$37.2 million (see *Engineering Construction Activity, Australia* (Cat. no. 8762.0)).

TOURIST ACCOMMODATION

Original terms Hotels, motels and guest houses, and serviced apartments

Rooms available in licensed hotels, motels and guest houses, and serviced apartments increased by 1.1% in the March quarter 2000 compared with the March quarter 1999. Room occupancy rates increased from 66.1% to 66.2%, with rates for serviced apartments increasing from 70.5% to 72.4%.

Takings increased by 6.0% overall in the March quarter 2000 compared with the March quarter 1999, with takings for serviced apartments increasing most, by 8.8%. Average takings per room night occupied increased for licensed hotels with facilities (from \$84 to \$88), motels and guest houses (from \$81 to \$83) and serviced apartments (from \$104 to \$106).

Other tourist accommodation Holiday flats, units and houses recorded a decrease in capacity (11.1%) and takings (9.3%) comparing March quarter 2000 with March quarter 1997. For caravan parks, there was an increase in capacity (9.7%) and takings (25.7%), while visitor hostels recorded a decrease in capacity (-8.2%) and an increase in takings (31.4%) (see table 31 and *Tourist Accommodation, Australia* (Cat. no. 8635.0)).

ENVIRONMENTAL
EXPENDITURE BY LOCAL
GOVERNMENT

Australian local governments spent a total of \$2.1 billion on measures to protect the environment in 1998-99. This was an average of \$114 per person on environment protection services and activities. Tasmanian councils spent the most per capita, at \$202 per person (see *Environmental Expenditure, Local Government, Australia, 1998-99* (Cat. no. 4611.0)).

LIST OF TABLES

1	Population	9
2	Births, deaths and marriages	9
3	Labour force status	10
4	Labour force status by region, males	11
5	Labour force status by region, females	12
6	Labour force status by region, persons	13
7	Teenage labour market	14
8	All employed persons by occupation	15
9	Employed wage and salary earners, sector and industry	16
10	Average hours worked	16
11	Job vacancies	17
12	Industrial disputes	17
13	Average weekly earnings of employees	18
14	Indexes of total hourly rates of pay	19
15	Summary of annual movements in wages and prices	20
16	House price index numbers, Hobart	20
17	Consumer price index, Hobart and eight capital cities combined	21
18	Price index of materials used in building other than house building, Hobart	22
19	Production of selected commodities	24
20	Livestock slaughtering: original	25
21	Livestock slaughtering: seasonally adjusted and trend	25
22	Meat production	26
23	Principal mineral concentrates produced	26
24	Sawmills and plywood mills, logs delivered and timber produced	27
25	Chipping and grinding of wood	28
26	Logs delivered for milling or chipping	28
27	Building approvals	29
28	Secured housing commitments	30
29	Private new capital expenditure by type of asset	30
30	Banking statistics	31
31	Accommodation establishments	32
32	National Parks, person entries	33
33	Tracks in National Parks, walker registrations	33
34	Registrations of new motor vehicles	34
35	Turnover of retail establishments at current prices	35
36	Value of overseas trade—Tasmania and Australia	36
37	Merchandise exports by selected countries and country groups	36
38	Merchandise exports by selected commodity groups	37
39	Major Statistical Indicators—Australia and State comparisons	38
40	Major Statistical Indicators—Tasmanian Statistical Divisions	40

1

POPULATION

	<i>Estimated resident population at end of period</i>	<i>Natural increase(a)</i>	<i>Net estimated migration gain</i>	<i>Total population growth</i>	<i>Annual growth rate(b)</i>
	'000	'000	'000	'000	%
1997	473.5	2.4	-3.4	-1.0	-0.20
1998	471.7	2.1	-3.9	-1.8	-0.38
1999	470.3	2.5	-3.9	-1.4	-0.31
1997					
December qtr	472.6	0.5	-1.0	-0.4	-0.34
1998					
March qtr	472.3	0.6	-1.0	-0.3	-0.38
June qtr	471.7	0.5	-1.1	-0.6	-0.38
September qtr p	471.4	0.5	-0.8	-0.3	-0.36
December qtr p	470.9	0.7	-1.2	-0.4	-0.36
1999					
March qtr p	470.5	0.6	-1.0	-0.5	-0.39
June qtr p	470.3	0.7	-0.9	-0.2	-0.31
September qtr p	470.1	0.5	-0.6	-0.1	-0.26
December qtr p	469.9	0.5	-0.7	-0.3	-0.23

(a) Excess of live births registered over deaths registered (based on usual State of residence).

(b) Percentage growth from same quarter in previous year.

Source: Australian Demographic Statistics (Cat. no. 3101.0).

2

BIRTHS, DEATHS AND MARRIAGES(a)

	<i>Births</i>		<i>Deaths</i>		<i>Infant mortality(b)</i>		<i>Marriages</i>	
	<i>no.</i>	<i>rate(c)</i>	<i>no.</i>	<i>rate(d)</i>	<i>no.</i>	<i>rate(e)</i>	<i>no.</i>	<i>rate(f)</i>
1997	5 974	1.768	3 837	6.8	43	7.2	2 672	5.6
1998	5 909	1.809	3 557	6.3	30	5.1	2 599	5.5
1999	5 975	n.a.	3 763	n.a.	46	7.7	2 449	5.2
1998								
September qtr	1 541	..	1 029	..	9	5.8	331	..
December qtr	1 484	..	768	..	7	4.7	658	..
1999								
March qtr p	1 471	..	914	..	9	6.1	808	..
June qtr p	1 582	..	909	..	12	7.6	636	..
September qtr p	1 555	..	1 035	..	16	10.3	327	..
December qtr p	1 367	..	905	..	9	6.6	678	..

(a) Usual residents of Tasmania.

(b) Deaths of children under one year of age.

(c) Total fertility rate. The sum of age specific fertility rates (live births at each age of a mother per female population of that age). It represents the number of children a woman would bear during her lifetime if she experienced age-specific fertility rates at each age of her reproductive life.

(d) Standardised death rate. The overall death rate, per 1,000 persons, that would have prevailed in a standard population if it had experienced at each age the death rates of the population being studied. The standard population used in these calculations is all persons in the 1991 Australian population.

(e) Rate per 1,000 live births.

(f) Crude marriage rate is the number of marriages registered during the calendar year, per 1,000 estimated resident population at 30 June of that year.

Source: Australian Demographic Statistics (Cat. no. 3101.0).

3

LABOUR FORCE STATUS(a)—SEASONALLY ADJUSTED AND TREND

	Seasonally adjusted series(b)				Trend series(b)			
	Employed	Unemployed)	Unemploy- ment rate	Participation rate	Employed	Unemployed	Unemploy- ment rate	Participation rate
	'000	'000	%	%	'000	'000	%	%
MALES								
1999								
June	111.0	13.4	10.8	69.0	110.1	13.3	10.8	68.5
July	110.5	12.7	10.3	68.3	110.4	12.9	10.5	68.4
August	110.5	11.5	9.4	67.7	110.4	12.7	10.3	68.3
September	110.2	13.1	10.6	68.4	110.4	12.6	10.3	68.3
October	109.8	12.5	10.2	67.9	110.2	12.6	10.3	68.2
November	109.9	13.5	10.9	68.5	110.1	12.5	10.2	68.0
December	110.5	12.4	10.1	68.2	109.9	12.2	10.0	67.8
2000								
January	109.8	11.8	9.7	67.5	109.8	11.8	9.7	67.5
February	109.7	10.9	9.1	66.9	109.6	11.6	9.5	67.2
March	109.3	11.0	9.1	66.7	109.4	11.5	9.5	67.1
April	108.5	11.6	9.7	66.6	109.3	11.7	9.7	67.1
May	109.3	11.9	9.8	67.2	109.3	12.0	9.9	67.3
June	110.2	13.6	11.0	68.6	109.4	12.4	10.2	67.5
FEMALES								
1999								
June	86.4	7.4	7.9	49.5	85.8	7.3	7.9	49.1
July	85.5	6.6	7.1	48.5	85.9	7.3	7.8	49.1
August	86.4	7.2	7.7	49.3	86.2	7.3	7.8	49.3
September	86.8	7.5	8.0	49.7	86.7	7.4	7.8	49.6
October	86.6	7.6	8.1	49.6	87.3	7.5	7.9	50.0
November	88.0	8.0	8.4	50.6	88.0	7.7	8.0	50.4
December	88.9	7.6	7.9	50.8	88.5	7.8	8.1	50.7
2000								
January	89.8	7.9	8.1	51.4	88.9	8.0	8.3	51.0
February	88.3	7.8	8.1	50.6	89.0	8.2	8.4	51.1
March	89.9	8.3	8.5	51.7	89.1	8.3	8.5	51.2
April	88.2	9.2	9.4	51.2	89.2	8.4	8.6	51.3
May	88.7	8.6	8.9	51.2	89.3	8.3	8.5	51.3
June	90.7	7.2	7.4	51.4	89.5	8.3	8.5	51.4
TOTAL								
1999								
June	197.4	20.9	9.6	59.0	195.9	20.7	9.5	58.5
July	196.0	19.2	8.9	58.2	196.3	20.2	9.3	58.5
August	196.8	18.6	8.6	58.2	196.7	20.0	9.2	58.6
September	197.0	20.6	9.5	58.8	197.1	20.0	9.2	58.7
October	196.4	20.2	9.3	58.5	197.5	20.1	9.2	58.8
November	197.9	21.5	9.8	59.3	198.1	20.2	9.2	59.0
December	199.4	20.0	9.1	59.3	198.5	20.1	9.2	59.0
2000								
January	199.6	19.6	9.0	59.2	198.6	19.9	9.1	59.0
February	198.0	18.7	8.6	58.5	198.6	19.7	9.0	59.0
March	199.2	19.3	8.9	59.0	198.5	19.8	9.1	58.9
April	196.7	20.8	9.6	58.7	198.5	20.0	9.2	59.0
May	198.0	20.6	9.4	59.0	198.6	20.3	9.3	59.1
June	200.9	20.8	9.4	59.8	198.8	20.7	9.4	59.2

(a) For explanation of terms and concepts, refer to Labour Force, Australia, Preliminary (Cat. no. 6202.0).

(b) Seasonal factors are reviewed annually to take account of each additional year's data. The results of the review are used to compile revised seasonally adjusted and trend estimates each February. Trend estimates for the most recent months are also revised each month; see Notes on page 2.

Source: Labour Force, Australia, Preliminary (Cat. no. 6202.0).

4

LABOUR FORCE STATUS BY REGION—MALES(a)(b)

	<i>Total employed</i>	<i>Total unemployed</i>	<i>Unemployment rate</i>	<i>Participation rate</i>
	'000	'000	%	%
HOBART AND SOUTHERN STATISTICAL DIVISIONS				
1997				
June	52.0	6.8	11.5	66.0
1999				
June	51.8	6.5	11.1	66.8
2000				
April	51.0	5.3	9.5	64.7
May	51.4	5.6	9.8	65.3
June	51.9	6.1	10.6	66.0
NORTHERN STATISTICAL DIVISION				
1997				
June	32.1	4.2	11.6	69.8
1999				
June	34.3	3.3	8.8	70.9
2000				
April	32.8	2.8	7.9	67.6
May	33.1	2.5	7.0	67.9
June	34.1	3.3	8.9	69.9
MERSEY-LYELL STATISTICAL DIVISION				
1997				
June	24.8	2.6	9.4	69.9
1999				
June	24.2	3.3	12.2	68.7
2000				
April	25.7	3.3	11.3	71.5
May	26.0	2.9	10.1	71.1
June	23.6	3.8	13.8	69.9
TASMANIA				
1997				
June	108.9	13.6	11.1	67.9
1999				
June	110.2	13.1	10.6	68.4
2000				
April	109.5	11.4	9.4	67.1
May	110.5	11.0	9.1	67.4
June	109.5	13.2	10.8	68.0

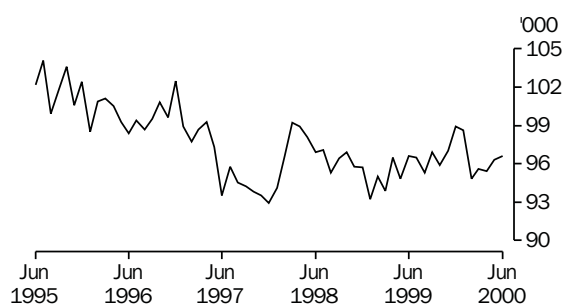
(a) For explanation of terms and concepts, refer to Labour Force, Australia (Cat. no. 6203.0).

(b) Data in this table are original series, i.e. they are not part of a seasonally adjusted or a trend series. Accordingly, care should be exercised when using these data.

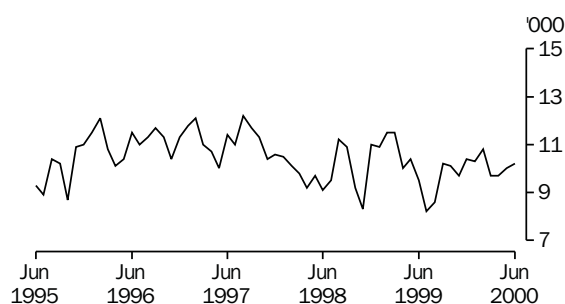
Source: Labour Force, Selected Summary Tables, Australia (Cat. no. 6291.0.40.001).

Hobart and Southern Statistical Divisions—Persons (see table 6)

EMPLOYMENT



UNEMPLOYMENT



5

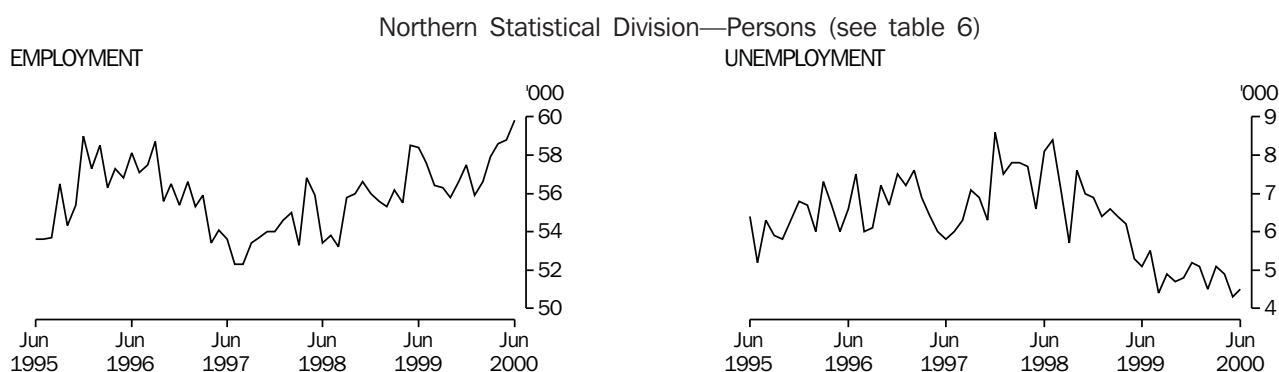
LABOUR FORCE STATUS BY REGION—FEMALES(a)(b)

	<i>Total employed</i>	<i>Total unemployed</i>	<i>Unemployment rate</i>	<i>Participation rate</i>
	'000	'000	%	%
HOBART AND SOUTHERN STATISTICAL DIVISIONS				
1997				
June	41.5	4.6	10.1	49.2
1999				
June	44.8	3.0	6.3	51.9
2000				
April	44.4	4.4	9.0	52.4
May	45.0	4.4	9.0	53.5
June	44.7	4.1	8.3	52.7
NORTHERN STATISTICAL DIVISION				
1997				
June	21.5	1.6	6.8	43.8
1999				
June	24.1	1.8	7.1	48.2
2000				
April	25.8	2.1	7.5	50.4
May	25.7	1.8	6.7	49.3
June	25.8	1.2	4.4	49.0
MERSEY-LYELL STATISTICAL DIVISION				
1997				
June	17.0	2.9	14.5	46.8
1999				
June	16.9	2.3	12.0	44.1
2000				
April	19.6	1.9	8.9	51.4
May	19.3	2.1	9.7	50.7
June	19.6	1.8	8.3	49.9
TASMANIA				
1997				
June	80.0	9.1	10.2	47.1
1999				
June	85.9	7.2	7.7	49.1
2000				
April	89.7	8.4	8.6	51.6
May	89.9	8.4	8.5	51.6
June	90.1	7.0	7.2	51.0

(a) For explanation of terms and concepts, refer to Labour Force, Australia (Cat. no. 6203.0).

(b) Data in this table are original series, i.e. they are not part of a seasonally adjusted or a trend series. Accordingly, care should be exercised when using these data.

Source: Labour Force, Selected Summary Tables, Australia (Cat. no. 6291.0.40.001).



6

LABOUR FORCE STATUS BY REGION—PERSONS(a)(b)

	<i>Total employed</i>	<i>Total unemployed</i>	<i>Unemployment rate</i>	<i>Participation rate</i>
	'000	'000	%	%
HOBART AND SOUTHERN STATISTICAL DIVISIONS				
1997				
June	93.5	11.4	10.9	57.4
1999				
June	96.6	9.5	9.0	59.1
2000				
April	95.4	9.7	9.2	58.3
May	96.3	10.0	9.4	59.2
June	96.6	10.2	9.5	59.2
NORTHERN STATISTICAL DIVISION				
1997				
June	53.6	5.8	9.8	56.7
1999				
June	58.4	5.1	8.1	59.5
2000				
April	58.6	4.9	7.7	58.8
May	58.8	4.3	6.9	58.3
June	59.8	4.5	7.0	59.3
MERSEY-LYELL STATISTICAL DIVISION				
1997				
June	41.8	5.4	11.5	57.8
1999				
June	41.1	5.6	12.1	55.9
2000				
April	45.2	5.2	10.3	61.3
May	45.3	5.0	9.9	58.7
June	43.2	5.5	11.4	59.5
TASMANIA				
1997				
June	188.9	22.7	10.7	57.3
1999				
June	196.1	20.3	9.4	58.5
2000				
April	199.2	19.8	9.1	59.1
May	200.4	19.4	8.8	59.3
June	199.6	20.2	9.2	59.3

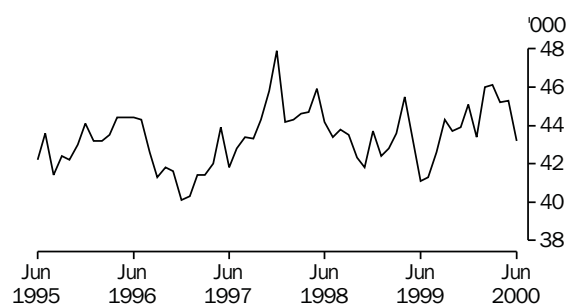
(a) For explanation of terms and concepts, refer to Labour Force, Australia (Cat. no. 6203.0).

(b) Data in this table are original series, i.e. they are not part of a seasonally adjusted or a trend series. Accordingly, care should be exercised when using these data.

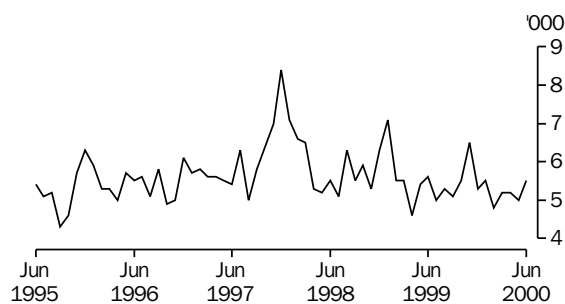
Source: Labour Force, Selected Summary Tables, Australia (Cat. no. 6291.0.40.001).

Mersey-Lyell Statistical Division—Persons (see table 6)

EMPLOYMENT



UNEMPLOYMENT



7

TEENAGE LABOUR MARKET(a)

	<i>Employed</i>		<i>Unemployed</i>		<i>Labour force</i>	<i>Not in labour force</i>	<i>Civilian population aged 15–19</i>	<i>Unemployment rate</i>	<i>Unemployment population ratio</i>	<i>Participation rate</i>
	<i>Full time</i>	<i>Total</i>	<i>Looking for full time work</i>	<i>Total</i>						
	'000	'000	'000	'000	'000	'000	'000	%	%	%
ATTENDING NEITHER A SCHOOL NOR A TERTIARY INSTITUTION FULL TIME										
1997										
June	5.1	7.4	3.0	3.0	10.5	2.4	12.8	29.1	23.7	81.6
1999										
June	5.7	8.0	2.2	2.6	10.6	1.4	12.0	24.3	21.5	88.5
2000										
April	5.7	7.9	1.8	1.8	9.6	1.5	11.2	18.2	15.7	86.1
May	6.6	8.5	2.7	2.8	11.3	1.2	12.6	24.6	22.1	90.1
June	6.3	8.3	2.1	2.3	10.6	1.8	12.4	21.7	18.6	85.5
ATTENDING SCHOOL OR A TERTIARY INSTITUTION FULL TIME										
1997										
June	0.2	5.2	0.3	2.2	7.4	13.9	21.3	29.8	10.3	34.7
1999										
June	0.2	7.2	0.4	1.6	8.8	13.8	22.6	17.7	6.9	38.8
2000										
April	0.1	5.5	0.7	3.1	8.6	15.0	23.7	36.3	13.2	36.4
May	0.1	5.7	0.5	2.4	8.1	14.1	22.2	29.4	10.8	36.6
June	0.5	7.3	0.7	2.0	9.3	13.1	22.4	21.4	8.9	41.5
TOTAL										
1997										
June	5.3	12.6	3.2	5.2	17.9	16.3	34.1	29.4	15.4	52.3
1999										
June	6.0	15.2	2.6	4.1	19.4	15.2	34.6	21.3	11.9	56.0
2000										
April	5.8	13.4	2.4	4.9	18.2	16.6	34.8	26.7	14.0	52.3
May	6.7	14.3	3.2	5.2	19.5	15.4	34.8	26.6	14.9	55.9
June	6.8	15.6	2.8	4.3	19.9	14.9	34.8	21.6	12.3	57.2

(a) Persons aged 15–19 years. For explanation of terms and concepts, refer to Labour Force, Australia (Cat. no. 6203.0). Care should be exercised when using these series as some estimates are subject to high sampling variability.

Source: Unpublished data, Labour Force, Estimates; Labour Force, Teenage Employment and Unemployment, Australia, Preliminary, Data Report (Cat. no. 6202.0.40.001).

	May 1999			May 2000		Proportion of total employed	
	Persons	Males	Females	Persons	May 1999	May2000	
	'000	'000	'000	'000	%	%	
Managers and administrators							
Generalist managers	1.6	2.2	—	2.2	0.8	1.1	
Specialist managers	3.6	2.8	1.2	4.0	1.8	2.0	
Farmers and farm managers	7.1	5.3	2.2	7.5	3.6	3.8	
Total	12.2	10.2	3.4	13.6	6.2	6.9	
Professionals							
Science, building and engineering professionals	2.7	2.8	1.0	3.9	1.4	2.0	
Business and information professionals	4.4	3.6	2.1	5.6	2.2	2.8	
Health professionals	7.8	2.3	7.0	9.2	4.0	4.7	
Education professionals	8.7	4.0	5.8	9.8	4.4	5.0	
Social, arts and miscellaneous professionals	6.9	2.6	2.9	5.5	3.5	2.8	
Total	30.5	15.2	18.7	34.0	15.5	17.3	
Associate professionals							
Science, engineering and related associate professionals	2.8	1.9	0.8	2.7	1.4	1.4	
Business and administration associate professionals	5.2	2.0	2.4	4.4	2.6	2.2	
Managing supervisors (sales and service)	7.9	5.1	2.8	7.9	4.0	4.0	
Other associate professionals	2.2	1.7	1.1	2.8	1.1	1.4	
Health and welfare associate professionals	1.0	0.2	1.0	1.2	0.5	0.6	
Total	19.2	10.9	8.1	18.9	9.8	9.6	
Tradespersons and related workers							
Mechanical and fabrication engineering tradespersons	4.8	4.1	—	4.1	2.4	2.1	
Automotive tradespersons	2.5	3.3	—	3.3	1.3	1.7	
Electrical and electronics tradespersons	4.9	4.5	—	4.5	2.5	2.3	
Construction tradespersons	4.1	5.3	0.1	5.4	2.1	2.7	
Other tradespersons and related workers	9.6	7.9	2.7	10.6	4.9	5.4	
Total	25.8	25.0	2.8	27.8	13.1	14.1	
Advanced clerical and service workers							
Secretaries and personal assistants	2.5	—	2.7	2.7	1.3	1.4	
Other advanced clerical and service workers	2.1	0.9	2.2	3.1	1.1	1.6	
Total	4.7	0.9	4.9	5.8	2.4	2.9	
Intermediate clerical, sales and service workers							
Intermediate clerical workers	20.9	4.8	13.8	18.6	10.6	9.5	
Intermediate sales and related workers	3.5	2.4	1.0	3.3	1.8	1.7	
Intermediate service workers	13.7	2.7	10.7	13.4	7.0	6.8	
Total	38.1	9.8	25.6	35.4	19.4	18.0	
Intermediate production and transport workers							
Intermediate plant operators	5.6	6.3	0.3	6.6	2.8	3.4	
Intermediate machine operators	2.4	1.5	0.8	2.3	1.2	1.2	
Road and rail transport drivers	7.6	6.2	0.3	6.5	3.9	3.3	
Other intermediate production and transport workers	5.6	3.2	1.1	4.3	2.8	2.2	
Total	21.1	17.2	2.6	19.8	10.7	10.1	
Elementary clerical, sales and service workers							
Elementary clerks	1.5	0.9	0.8	1.7	0.8	0.9	
Elementary sales workers	16.8	4.8	10.8	15.6	8.5	7.9	
Elementary service workers	1.2	0.7	1.5	2.2	0.6	1.1	
Total	19.5	6.5	13.0	19.5	9.9	9.9	
Labourers and related workers							
Cleaners	6.3	1.5	4.6	6.1	3.2	3.1	
Factory labourers	6.5	4.0	2.6	6.6	3.3	3.4	
Other labourers and related workers	12.8	9.2	3.7	12.8	6.5	6.5	
Total	25.5	14.7	10.8	25.5	13.0	13.0	
Total employed	196.7	110.5	89.9	200.4	100.0	100.0	

(a) For explanation of terms and concepts, refer to Labour Force, Australia (Cat. no. 6203.0).

Source: Unpublished data, Labour Force, Estimates.

9

WAGE AND SALARY EARNERS, SECTOR AND INDUSTRY(a)

	<i>Employees, November 1999</i>			<i>Percentage distribution</i>	
	<i>Private</i>	<i>Public</i>	<i>Total</i>	<i>November 1998</i>	<i>November 1999</i>
	<i>'000</i>	<i>'000</i>	<i>'000</i>	<i>%</i>	<i>%</i>
Agriculture, forestry, & fishing	n.a.	0.6	0.6	0.4	0.4
Mining	1.2	—	1.2	0.9	0.8
Manufacturing	21.4	0.1	21.5	14.3	13.5
Electricity, gas & water, Construction	4.1	1.9	6.1	4.1	3.8
Wholesale & Retail trade	37.3	—	37.3	20.0	23.5
Accommodation, cafes & restaurants	9.9	—	10.0	6.6	6.3
Transport & storage	5.2	0.8	6.0	3.9	3.8
Communication services	0.4	1.9	2.3	1.5	1.4
Finance, insurance, Property & business services	14.5	0.8	15.4	9.8	9.7
Education	3.0	14.4	17.4	11.4	11.0
Government administration and defence	—	9.5	9.5	6.4	6.0
Health and community services	12.8	8.3	21.1	15.1	13.3
Cultural, recreational, Personal and other services	7.4	3.2	10.6	5.7	6.7
Total all industries	117.1	41.5	158.7	100.0	100.0

(a) For explanation of terms and concepts, refer to Wage and Salary Earners, Australia (Cat. no. 6248.0).

Source: *Wage and Salary Earners, Australia* (Cat. no. 6248.0).

10

AVERAGE HOURS WORKED

	<i>Average weekly total hours worked, all employed persons(a)</i>		
	<i>Males</i>	<i>Females</i>	<i>Persons</i>
1999			
February	36.7	25.6	31.8
May	38.8	28.0	34.0
August	39.2	28.1	34.3
November	39.8	27.2	34.1
2000			
February	37.1	24.7	31.6
May	38.9	28.1	34.1

(a) For explanation of terms and concepts, refer to Labour Force, Australia (Cat. no. 6203.0).

Source: *Unpublished data*.

11

JOB VACANCIES(a)(b)

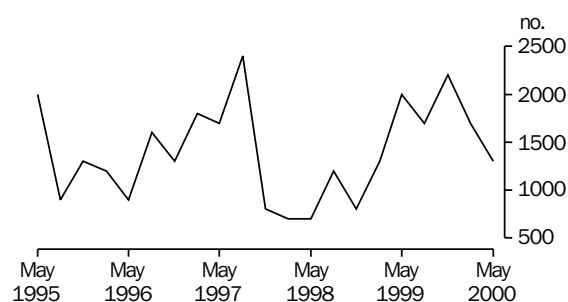
	<i>no.</i>	<i>rate(c)</i>
	'000	%
1999		
February	1.3	0.8
May	2.0	1.4
August	1.7	1.0
November	2.2	1.3
2000		
February	1.7	1.0
May	1.3	0.8

(a) For explanation of terms and concepts, refer to Job Vacancies, Australia (Cat. no. 6354.0).

(b) Care should be exercised in using these series as some estimates are subject to high sampling variability.

(c) Job vacancies are expressed as a percentage of the number of job vacancies divided by the number of employees plus job vacancies.

JOB VACANCIES



12

INDUSTRIAL DISPUTES(a)

	<i>Working days lost</i>	<i>Twelve months ended</i>	<i>Working days lost per thousand employees</i>
	'000		<i>no.</i>
1999		1999	
April	—	April	16
May	0.1	May	15
June	—	June	14
July	—	July	14
August	0.1	August	6
September	—	September	5
October	—	October	5
November	—	November	3
December	—	December	2
2000		2000	
January	0.1	January	3
February	—	February	3
March	0.2	March	4
April	0.2	April	5
Twelve months ended			
April 2000	0.8		

(a) For explanation of terms and concepts, refer to Industrial Disputes, Australia (Cat. no. 6321.0).

AVERAGE WEEKLY EARNINGS OF EMPLOYEES(a)—ORIGINAL AND TREND

	<i>Full time adult males</i>		<i>All males</i>	<i>Full time adult females</i>		<i>All females</i>	<i>Full time adult persons</i>		<i>All employees</i>
	<i>Weekly ordinary time earnings</i>	<i>Weekly total earnings</i>	<i>Weekly total earnings</i>	<i>Weekly ordinary time earnings</i>	<i>Weekly total earnings</i>	<i>Weekly total earnings</i>	<i>Weekly ordinary time earnings</i>	<i>Weekly total earnings</i>	<i>Weekly total earnings</i>
	\$	\$	\$	\$	\$	\$	\$	\$	\$
ORIGINAL									
1998									
November	738.50	783.70	672.90	621.30	637.00	407.70	699.30	734.70	537.00
1999									
February	747.40	803.10	696.30	619.90	632.20	422.50	705.10	746.40	560.50
May	731.90	771.20	657.80	613.70	625.30	421.00	692.00	722.00	539.60
August	749.70	778.50	660.50	619.10	629.90	420.70	703.60	726.10	537.60
November	761.00	801.60	682.50	641.30	658.90	433.90	719.00	751.50	554.90
2000									
February	767.70	799.30	686.20	639.60	656.70	444.20	723.90	750.60	566.70
TREND(B)									
1998									
November	736.30	784.10	672.80	617.30	630.60	414.90	696.50	732.70	543.00
1999									
February	738.70	784.30	672.80	616.40	629.10	417.10	697.30	731.90	544.60
May	743.00	784.20	671.10	618.80	630.90	420.60	700.80	732.30	545.30
August	749.70	786.50	671.40	625.50	638.60	426.60	707.00	735.70	547.20
November	756.90	791.80	675.20	632.40	647.30	432.20	713.40	741.20	551.30
2000									
February	764.30	799.30	681.30	638.10	654.80	438.30	719.30	747.70	558.30

(a) For explanation of terms and concepts, refer to Average Weekly Earnings, States and Australia (Cat. no. 6302.0).

(b) ABS trend estimates for the most recent months are revised, see Notes on page 2.

Source: Average Weekly Earnings, States and Australia (Cat. no. 6302.0).

	Index numbers				Percentage change		
	Jun qtr 1999	Sept qtr 1999	Dec qtr 1999	Mar qtr 2000	Jun qtr 1999 to Sep qtr 1999	Sep qtr 1999 to Dec qtr 1999	Dec qtr 1999 to Mar qtr 2000
SELECTED INDUSTRIES(C)							
Manufacturing	104.8	105.2	105.8	106.6	0.4	0.6	0.8
Retail trade	104.1	105.1	105.7	106.0	1.0	0.6	0.3
Transport & storage	105.4	107.2	107.6	108.0	1.7	0.4	0.4
Government administration and defence	103.2	104.4	104.7	104.8	1.2	0.3	0.1
Education	105.7	107.9	107.9	108.3	2.1	—	0.4
Health and community services	103.2	103.8	104.7	104.9	0.6	0.9	0.2
Total all industries(d)	104.6	105.5	106.0	106.5	0.9	0.5	0.5
OCCUPATION							
Professionals	105.1	106.5	106.8	107.2	1.3	0.3	0.4
Associate Professionals	104.9	105.5	105.9	106.4	0.6	0.4	0.5
Tradespersons & related workers	104.3	105.0	105.6	106.2	0.7	0.6	0.6
Intermediate clerical, sales & service workers	103.9	105.1	105.7	106.0	1.2	0.6	0.3
Intermediate production & transport workers	105.0	105.4	105.8	106.3	0.4	0.4	0.5
Elementary clerical, sales & service workers	105.2	107.5	108.0	108.6	2.2	0.5	0.6
Labourers & related workers	103.6	104.4	105.0	105.5	0.8	0.6	0.5
All occupations	104.6	105.5	106.0	106.5	0.9	0.5	0.5

(a) Base of each index: September quarter 1997 = 100.0.

(b) These indexes are a measure of quarterly changes in wage and salary costs for employee jobs. They were compiled for the first time for the December quarter 1997. They are one of four sets of indexes that together comprise the Wage Cost Index. For explanation of terms and concepts, refer to Wage Cost Index, Australia (Cat. no. 6345.0).

(c) Industry is shown at the ANZSIC division level for selected divisions.

(d) Excludes Agriculture, forestry and fishing.

Source: Unpublished data.

15

SUMMARY OF ANNUAL MOVEMENTS IN WAGES AND PRICES(a)

	<i>CPI All groups–Hobart</i>	<i>Price index of materials used in house building All groups–Hobart(b)</i>	<i>Price index of materials used in building other than house building All groups–Hobart(b)</i>	<i>Average weekly total earnings, full-time adult employees(c)</i>
1996–97	1.5	–0.5	1.0	4.6
1997–98	–0.1	0.7	0.9	5.1
1998–99	1.0	1.0	0.9	2.4
1998				
March	–0.3	0.9	1.0	4.3
June	0.6	1.6	1.2	4.9
September	1.8	1.8	1.6	3.3
December	1.2	1.4	1.2	3.3
1999				
March	0.5	0.7	0.7	3.4
June	0.4	–0.1	0.2	–0.3
September	0.4	–0.3	0.1	0.8
December	1.1	0.2	–0.2	2.3
2000				
March	2.6	2.0	0.6	0.6

(a) Weekly award rates of pay collection has been discontinued from June 1997.

(b) Only quarterly data collected from June 1997. Earlier data has been re-compiled from monthly to quarterly.

(c) March, June, September and December data relates to February, May, August and November survey dates as published in 6302.2.

Source: Consumer Price Index, Australia (Cat. no. 6401.0); Price Index of Materials Used in House Building, Six State Capital Cities (Cat. no. 6408.0), (quarterly from June 1997); Price Index of Materials Used in Other than House Building, Six State Capital Cities (Cat. no. 6407.0), (quarterly from June 1997); Average Weekly Earnings, States and Australia (Cat. no. 6302.0).

16

HOUSE PRICE INDEX NUMBERS(a)(b), HOBART

	<i>Established house price index</i>		<i>Project home price index</i>	
	<i>Index</i>	<i>% change(c)</i>	<i>Index</i>	<i>% change(c)</i>
1996–97	128.5	–1.0	123.3	–0.1
1997–98	125.4	–2.4	123.3	—
1998–99	123.2	–1.8	123.3	—
1998				
March	129.5	4.5	123.3	—
June	124.8	–3.6	123.3	—
September	123.8	–0.8	123.3	—
December	121.7	–1.7	123.3	—
1999				
March	123.7	1.6	123.3	—
June	123.6	–0.1	123.3	—
September	125.3	1.4	124.0	0.6
December	127.8	2.0	125.4	1.1
2000				
March	128.6	0.6	127.5	1.7

(a) Base of each Index: 1989–90 = 100.

(b) Used in calculating the mortgage interest charges component of the Consumer Price Index.

(c) Percentage change over previous period.

Source: House Price Indexes: Eight Capital Cities (Cat. no. 6416.0).

						Hobart
	Food	Clothing	Housing	Household equipment and operation	Transportation	Alcohol and tobacco
1997						
March	120.7	105.7	101.9	120.1	122.8	153.1
June	121.0	105.3	98.4	120.1	121.7	153.5
September	121.0	104.8	97.7	119.7	122.2	153.6
December	121.7	106.0	95.5	119.7	122.1	155.6
1998						
March	121.7	105.5	95.3	119.4	121.7	158.0
June	122.3	105.3	95.5	119.5	120.5	160.2
September	124.7	105.1	95.6	120.4	120.4	159.6
December	125.0	105.7	95.4	120.8	118.6	159.1
1999						
March	125.5	104.7	95.8	119.5	118.4	161.5
June	126.8	104.6	95.9	119.4	120.4	160.0
September	126.3	104.5	96.9	119.3	123.1	158.1
December	127.5	103.9	97.4	119.1	123.8	163.3
2000						
March	127.8	104.9	98.8	120.2	126.6	167.2
						Hobart
						Weighted average of eight capital cities
	Health and personal care	Recreation and education	Index, all groups	% change over previous period, all groups	Index	% change over previous period
1997						
March	159.4	120.5	121.9	0.5	120.5	0.2
June	162.6	119.2	121.3	-0.5	120.2	-0.2
September	153.0	119.2	120.6	-0.6	119.7	-0.4
December	160.9	120.6	121.2	0.5	120.0	0.3
1998						
March	162.7	121.7	121.5	0.2	120.3	0.3
June	166.1	122.6	122.0	0.4	121.0	0.6
September	171.5	122.5	122.8	0.7	121.3	0.2
December	169.5	124.2	122.7	-0.1	121.9	0.5
1999						
March	154.4	125.2	122.1	-0.5	121.8	-0.1
June	154.9	124.9	122.5	0.3	122.3	0.4
September	160.7	125.6	123.3	0.7	123.4	0.9
December	160.0	125.6	124.0	0.6	124.1	0.6
2000						
March	161.9	125.7	125.3	1.0	125.2	0.9

(a) Base year: 1989-90 = 100.

(b) Further information on construction of CPI indexes is contained in the bulletin Australian Consumer Price Index Concepts, Sources and Methods (Cat. no. 6461.0).

Source: Consumer Price Index, Australia (Cat. no. 6401.0).

	<i>Index numbers for selected major building materials</i>					
	<i>Structural timber</i>	<i>Clay bricks</i>	<i>Ready mixed concrete</i>	<i>Precast concrete products</i>	<i>Steel decking, cladding etc.</i>	<i>Structural steel</i>
1996-97	110.3	125.3	116.2	132.2	115.0	126.2
1997-98	108.9	129.0	118.0	131.5	117.8	127.2
1998-99	109.1	130.8	119.5	131.6	110.8	128.0
1998						
March	109.2	129.4	120.4	131.7	118.9	127.4
June	112.4	129.4	119.9	131.7	114.3	127.4
September	109.4	130.2	119.2	131.7	111.3	127.7
December	108.9	131.1	120.6	131.7	111.3	128.1
1999						
March	108.9	131.1	120.4	131.5	110.3	128.1
June	109.2	130.8	117.9	131.5	110.3	128.1
September	108.2	126.9	119.4	131.6	113.7	128.8
December	111.7	126.9	118.0	131.6	104.6	128.8
2000						
March	116.9	130.9	117.5	131.6	110.1	128.8

	Index numbers for selected major building materials						
	Reinforcing steel bar, fabric and mesh	Aluminium windows	Fabricated steel products	Builders hardware	Sand and aggregate	Paint and other coatings	Non-ferrous pipes and fittings
1996-97	110.7	105.9	113.3	117.2	132.7	126.6	165.2
1997-98	112.7	107.2	114.7	113.7	124.5	127.3	164.3
1998-99	113.4	107.3	116.0	113.4	127.9	133.3	161.2
1998							
March	113.5	106.8	114.8	112.8	127.5	130.5	162.9
June	113.4	108.4	116.1	114.0	127.5	130.7	162.6
September	113.4	108.4	116.1	113.7	127.9	132.7	162.8
December	113.3	106.7	116.1	113.9	127.9	133.9	160.2
1999							
March	113.4	106.9	116.1	114.8	127.9	134.2	161.4
June	113.4	107.0	115.6	111.3	127.9	132.5	160.2
September	113.4	107.0	116.1	110.8	135.4	131.7	162.4
December	110.2	107.0	113.6	114.8	139.4	133.5	166.0
2000							
March	109.1	109.9	113.1	120.2	150.4	135.2	167.2

(a) Base year: 1989-90 = 100.

(b) Index numbers in this table have been recompiled to reflect the change to a quarterly collection basis from June 1997.

	<i>All electrical materials</i>		<i>All mechanical services</i>		<i>All plumbing materials</i>	
	<i>Index</i>	<i>% change over previous period</i>	<i>Index</i>	<i>% change over previous period</i>	<i>Index</i>	<i>% change over previous period</i>
1996–97	117.4	–1.0	117.0	1.7	122.8	–3.8
1997–98	117.2	–0.2	117.0	—	121.9	–0.7
1998–99	115.8	–1.2	119.0	1.7	124.5	2.1
1998						
March	116.9	–0.8	117.4	0.5	121.6	–0.3
June	116.5	–0.3	117.1	–0.3	121.0	–0.5
September	116.1	–0.3	117.8	0.6	124.9	3.2
December	116.8	0.6	119.1	1.1	124.1	–0.6
1999						
March	115.2	–1.4	119.4	0.3	124.4	0.2
June	115.2	—	119.5	0.1	124.5	0.1
September	115.9	0.6	119.3	–0.2	122.3	–1.8
December	117.5	1.4	119.8	0.4	126.5	3.4
2000						
March	118.3	0.7	110.3	0.4	128.0	1.2
	<i>All groups excluding electrical materials and mechanical services</i>		<i>All groups</i>			
	<i>Index</i>	<i>% change over previous period</i>	<i>Index</i>	<i>% change over previous period</i>		
1996–97	116.8	1.1	116.3	1.0		
1997–98	118.0	1.0	117.4	0.9		
1998–99	118.8	0.7	118.5	0.9		
1998						
March	118.2	0.4	117.7	0.4		
June	118.9	0.6	118.1	0.3		
September	119.1	0.2	118.4	0.3		
December	119.0	–0.1	118.6	0.2		
1999						
March	118.8	–0.2	118.5	–0.1		
June	118.4	–0.3	118.3	–0.2		
September	118.8	0.3	118.5	0.2		
December	118.4	–0.3	118.4	–0.1		
2000						
March	119.3	0.8	119.2	0.7		

(a) Base year: 1989–90 = 100.

(b) Index numbers in this table have been recompiled to reflect the change to a quarterly collection basis from June 1997.

Source: Price Index of Materials Used in Other than House Building, Six State Capital Cities (Cat. no. 6407.0).

	<i>Dairy products(a)</i>			<i>Staff hours worked</i>	
	<i>Whole milk(b)</i>	<i>Factory butter(c)</i>	<i>Factory cheese</i>	<i>Textile manufacturing(d)</i>	<i>Vegetable preserving</i>
	<i>million litres</i>	<i>tonnes</i>	<i>tonnes</i>	<i>'000</i>	<i>'000</i>
1996-97	529.4	10 869	25 398	1 349	1 534
1997-98	542.8	8 745	26 835	1 125	1 128
1998-99	603.4	11 546	29 973	1 061	1 084
1999					
April	44.3	992	2 353	82	90
May	35.1	1 180	980	88	110
June	19.6	501	1 187	98	99
July	13.6	307	431	79	78
August	25.2	244	1 161	94	97
September	60.8	406	3 599	96	62
October	89.3	1 257	3 850	92	66
November	87.1	1 508	4 054	94	104
December	81.6	1 562	4 714	71	87
2000					
January	66.8	879	3 735	43	60
February	51.7	378	3 473	96	90
March	47.3	608	3 804	103	92
April	38.0	363	2 857	75.2	87.8
May	n.y.a.	n.y.a.	n.y.a.	107.2	106.7
	<i>Newsprint(e)</i>	<i>Refined zinc</i>	<i>Metallurgical refining</i>	<i>Electricity(g)</i>	
	<i>'000 tonnes</i>	<i>'000 tonnes</i>	<i>Index(f)</i>	<i>million kW.h</i>	
1996-97	232.7	207.7	116.1	9 543	
1997-98	n.p.	197.0	116.6	9 700	
1998-99	n.p.	214.3	125.0	9 910	
1999					
April	n.p.	19.1	132.0	..	
May	n.p.	19.8	133.9	..	
June	n.p.	19.4	133.6	(Jun qtr)	2 570
July	n.p.	18.8	133.8	..	
August	n.p.	20.7	138.2	..	
September	n.p.	19.1	130.2	(Sept qtr)	2 680
October	n.p.	19.4	130.5	..	
November	n.p.	19.9	130.3	..	
December	n.p.	19.3	129.6	(Dec qtr)	2 390
2000					
January	n.p.	20.1	130.3	..	
February	n.p.	18.6	126.4	..	
March	n.p.	19.6	141.2	(Mar qtr)	2 360
April	n.p.	18.7	133.8	..	
May	n.p.	18.7	136.4	..	

(a) Source: Australian Dairy Corporation.

(b) Includes the whole milk equivalent of farm cream intake.

(c) Includes butter equivalent of butter oil.

(d) Includes spinning, weaving and carpet making. Reported by establishments which manufacture textiles only, or manufacture clothing and textiles in the one plant.

(e) Excludes production of directory newsprint and high grade specialty paper.

(f) Metallurgical refining index (Base year: 1979-80 = 100.0). Output from selected establishments covering the smelting and refining of ferro-alloys, zinc and aluminium. The weighting pattern is based on the establishments' value added as derived from the 1979-80 manufacturing Census. For multi product establishments, value added was apportioned to products on the basis of gross receipts from each product.

(g) Collected on a quarterly basis as from 1997.

Source: Unpublished data.

20

LIVESTOCK SLAUGHTERING

	Cattle					
	Bulls, bullocks and steers	Cows and heifers	Calves	Sheep	Lambs	Pigs
	'000	'000	'000	'000	'000	'000
1996–97	109.4	93.2	43.5	367.7	358.2	73.3
1997–98	93.4	123.6	53.9	461.0	423.3	78.1
1998–99	94.8	116.3	61.0	439.9	480.1	81.2
1998						
May	8.4	15.2	1.9	32.0	42.9	6.7
1999						
May	9.4	11.2	1.6	33.6	39.6	6.4
June	10.2	11.0	1.0	40.5	43.8	8.8
July	10.1	8.7	2.2	36.3	39.8	6.6
August	8.4	6.0	26.7	24.8	38.6	6.5
September	8.0	6.6	27.2	24.3	32.0	6.9
October	8.0	7.8	7.7	38.7	33.6	4.5
November	8.4	7.8	0.9	45.6	31.3	4.7
December	9.6	10.1	0.2	67.5	36.5	7.2
2000						
January	8.9	8.1	0.2	55.6	38.4	4.3
February	9.3	10.1	0.2	68.0	46.0	5.3
March	11.7	11.1	0.8	76.4	55.5	6.8
April	8.3	8.5	1.4	53.1	32.3	4.9
May	9.0	11.6	1.7	48.2	37.5	5.7

Source: Unpublished data.

21

LIVESTOCK SLAUGHTERING—SEASONALLY ADJUSTED(a) AND TREND(b)

	Seasonally adjusted			Trend		
	Cattle and calves	Sheep and lambs	Pigs	Cattle and calves	Sheep and lambs	Pigs
	'000	'000	'000	'000	'000	'000
1998						
May	24.0	69.4	6.5	23.6	70.9	6.6
1999						
May	22.0	73.1	6.6	23.1	79.2	7.0
June	23.1	81.4	7.3	24.3	85.1	7.0
July	24.4	92.4	5.7	25.2	91.2	6.8
August	30.0	115.5	7.8	25.5	95.0	6.6
September	25.8	82.8	6.6	25.1	95.0	6.3
October	23.7	100.9	5.1	24.2	92.0	6.0
November	21.8	84.1	5.8	23.5	88.0	5.7
December	19.4	77.7	5.6	23.0	85.0	5.5
2000						
January	25.1	77.9	4.9	23.0	84.0	5.5
February	23.9	89.0	6.2	23.2	84.4	5.5
March	26.8	94.7	5.8	23.1	84.7	5.6
April	19.3	80.9	5.3	22.8	84.4	5.6
May	21.5	80.4	5.5	22.5	84.9	5.5

(a) Seasonally adjusted factors are reviewed annually to take account of each additional year's original data. The results of the review are used to compile revised seasonally adjusted and trend estimates; see Notes page 2.

(b) ABS trend estimates for the most recent months are revised; see Notes page 2.

Source: Unpublished data.

22

MEAT PRODUCTION(a)

	<i>Beef</i>	<i>Veal</i>	<i>Mutton</i>	<i>Lamb</i>	<i>Pigmeat(b)</i>	<i>Total</i>
	<i>tonnes</i>	<i>tonnes</i>	<i>tonnes</i>	<i>tonnes</i>	<i>tonnes</i>	<i>tonnes</i>
1996-97	51 506	905	7 820	6 767	4 883	71 826
1997-98	53 061	1 148	9 840	8 072	4 915	77 042
1998-99	53 273	1 242	8 725	9 223	5 241	77 701
1998						
May	5 431	44	636	836	437	7 385
1999						
May	5 340	36	666	771	420	7 232
June	5 561	21	802	851	584	7 819
July	5 086	46	722	775	439	7 067
August	3 907	520	489	777	396	6 089
September	3 897	524	480	621	439	5 961
October	4 187	154	754	650	282	6 026
November	4 348	19	926	601	286	6 180
December	5 277	6	1 414	695	424	7 816
2000						
January	4 662	7	1 120	731	269	6 789
February	5 154	7	1 364	884	333	7 741
March	6 091	20	1 518	1 071	425	9 125
April	4 455	31	1 052	619	308	6 465
May	5 317	37	949	729	366	7 399

(a) Carcass weight.

(b) Includes pork used for production of bacon and ham.

Source: Unpublished data.

23

PRINCIPAL MINERAL CONCENTRATES PRODUCED

	<i>Copper</i>	<i>Iron (pellets)</i>	<i>Lead</i>	<i>Lead-zinc</i>	<i>Tin</i>	<i>Zinc</i>
	<i>'000 tonnes</i>	<i>'000 tonnes</i>	<i>'000 tonnes</i>	<i>'000 tonnes</i>	<i>'000 tonnes</i>	<i>'000 tonnes</i>
1996-97	99.7	809.4	101.4	38.0	16.3	356.9
1997-98	109.6	820.8	84.6	26.2	16.2	335.4
1998-99	r 113.5	1 816.1	101.8	12.6	12.5	382.3
1998						
March	26.1	253.8	21.9	8.2	3.3	79.4
June	27.8	402.5	18.1	6.0	4.4	80.1
September	25.8	453.3	21.5	5.6	1.3	92.0
December	29.9	478.2	26.1	3.2	4.0	95.3
1999						
March	r 30.5	481.2	29.5	2.5	3.7	97.1
June	r 27.3	403.4	24.7	1.5	3.6	98.0
September	r 27.5	479.5	28.4	2.7	3.9	94.8
December	r 26.9	568.2	28.1	2.5	4.0	86.2
2000						
March	r 26.2	517.7	22.4	1.4	3.3	70.4

Source: Mineral Resources Tasmania, Department of Infrastructure, Energy and Resources.

	Tasmanian-grown logs delivered					Sawn, peeled and sliced timber produced(a)				
	<i>Eucalypts</i>	<i>Hardwoods, excluding eucalypts(b)</i>	<i>Plant-ation(c)</i>	<i>Native soft-woods(d)</i>	<i>Total</i>	<i>Eucalypts</i>	<i>Hardwoods, excluding eucalypts(b)</i>	<i>Plant-ation(c)</i>	<i>Native soft-woods(d)</i>	<i>Total</i>
	'000 m ³	'000 m ³	'000 m ³	'000 m ³	'000 m ³	'000 m ³	'000 m ³	'000 m ³	'000 m ³	'000 m ³
1996-97	500.8	17.0	352.9	1.2	871.9	165.8	4.3	158.0	0.5	328.5
1997-98	496.8	24.3	357.7	1.6	880.3	171.1	5.3	167.3	0.4	344.2
1998-99	499.9	22.6	351.9	1.0	875.4	159.7	5.1	169.7	0.3	334.8
1998										
March	105.0	13.8	99.5	0.3	218.6	32.4	1.2	44.6	0.1	78.3
June	128.9	4.6	86.5	0.6	220.6	41.1	1.6	39.1	0.1	81.9
September	129.9	3.8	88.7	0.2	222.7	43.9	1.4	41.5	—	86.8
December	134.6	2.9	81.3	0.2	218.9	40.8	1.2	42.5	0.1	84.7
1999										
March	110.8	9.7	90.7	0.2	211.4	35.4	0.8	42.6	—	78.9
June	124.6	6.1	91.3	0.3	222.3	39.6	1.7	43.1	0.1	84.5
September	136.0	6.3	109.4	0.2	252.0	46.2	1.3	49.1	0.1	96.8
December	132.5	5.1	87.8	0.2	225.6	45.8	1.5	46.5	0.1	93.9
2000										
March	104.3	10.0	100.7	0.4	215.3	37.8	1.3	47.8	0.1	87.0

(a) Includes plywood, veneer and sliced timber production converted to an equivalent cubic measurement.

(b) Includes blackwood, myrtle, sassafras etc.

Source: Unpublished data.

25

CHIPPING AND GRINDING OF WOOD(a)

	Producing locations(b)	Materials used(c)		Chipped and ground wood production '000 tonnes green weight
		Logs delivered(d)	Sawmill offcuts	
	no.	'000 m ³	'000 m ³	
1996-97	27	3 207.4	433.2	3 609.3
1997-98	28	3 998.1	457.9	4 440.1
1998-99	29	3 459.6	373.4	3 929.9
1998				
March	28	1 014.7	116.6	1 157.7
June	28	1 048.0	120.9	1 118.3
September	29	872.5	87.3	981.5
December	29	798.3	112.0	889.5
1999				
March	29	862.9	79.2	997.7
June	29	925.9	94.9	1 061.1
September	30	1 056.8	134.1	1 225.4
December	30	1 075.4	96.4	1 207.3
2000				
March	30	1 152.1	103.6	1 308.7

(a) Both hardwoods and softwoods, separate details are not available.

(b) Capable of producing at end of year or actually producing during quarter.

(c) Data reported by weight, converted to cubic measure by the factor of 0.95 m³ per tonne.

(d) Includes log equivalent of limbwood and billets.

Source: Unpublished data.

26

LOGS DELIVERED FOR MILLING OR CHIPPING

	Sawmilling and plywood milling			Chipping and grinding(a)			Total		
	Crown land(b)	Private land	Total	Crown land(b)	Private land	Total	Crown land(b)	Private land	Total
	'000 m ³	'000 m ³	'000 m ³	'000 m ³	'000 m ³	'000 m ³	'000 m ³	'000 m ³	'000 m ³
1996-97	725.6	146.4	871.9	1 627.4	1 580.0	3 207.4	2 353.0	1 726.3	4 079.3
1997-98	750.7	129.6	880.3	1 894.9	2 103.1	3 998.1	2 645.7	2 232.7	4 878.3
1998-99	754.2	121.2	875.4	1 562.6	1 897.0	3 459.6	2 316.7	2 018.2	4 334.9
1998									
March	191.9	26.7	218.6	466.6	548.1	1 014.7	658.5	574.9	1 233.3
June	191.2	29.4	220.6	478.5	569.5	1 048.0	669.7	598.9	1 268.6
September	188.3	34.3	222.7	341.0	531.5	872.5	529.4	565.8	1 095.2
December	185.5	33.4	218.9	422.4	375.9	798.3	607.9	409.3	1 017.2
1999									
March	184.1	27.3	211.4	367.0	495.8	862.9	551.1	523.2	1 074.3
June	196.2	26.1	222.3	432.1	493.8	925.9	628.3	519.9	1 148.2
September	221.8	30.2	252.0	554.0	502.7	1 056.8	775.8	532.9	1 308.7
December	202.5	23.1	225.6	643.1	432.3	1 075.4	845.6	455.4	1 301.0
2000									
March	192.1	23.2	215.3	585.3	566.9	1 152.1	777.3	590.1	1 367.4

(a) Logs used are generally below sawmilling standard: includes log equivalent of limbwood and billets.

(b) Comprises all areas (including concession areas) from which royalties are payable to Forestry Tasmania.

Source: Unpublished data.

							Value		
	Dwelling units				New dwelling units	Alterations and additions to residential buildings(c)	Non-residential buildings		Total of all building
	New houses	New other residential buildings(a)	Other dwelling units created (conversions etc.)(b)	Total dwelling units			Private	Total	
	no.	no.	no.	no.	\$m	\$m	\$m	\$m	\$m
1996-97	1 593	251	17	1 861	r 157.2	r 35.4	r 121.6	159.0	r 351.8
1997-98	1 419	219	5	1 643	142.4	r 38.3	r 82.8	125.5	r 306.2
1998-99	1 297	104	9	1 410	r 131.4	r 36.6	115.8	r 174.6	r 342.4
1999									
May	94	—	1	95	8.5	2.7	5.3	10.1	21.3
June	76	11	1	88	9.0	3.5	5.3	7.3	19.7
July	147	9	2	158	15.2	r 3.8	15.3	18.7	37.6
August	101	16	1	118	11.8	3.9	8.2	10.2	25.8
September	115	4	—	119	11.9	3.3	23.1	23.3	38.5
October	142	19	—	161	15.6	r 4.2	8.8	9.8	29.7
November	155	26	2	183	15.7	r 4.0	4.3	6.2	25.8
December	160	20	—	180	18.4	2.6	8.2	13.1	34.1
2000									
January	139	28	13	180	21.2	4.3	5.8	6.4	31.9
February	135	33	0	168	16.4	4.3	20.7	21.4	42.2
March	149	14	3	166	r 17.5	r 4.1	7.0	9.8	31.4
April	123	12	2	137	r 13.9	r 3.9	2.3	8.0	25.8
May	164	45	29	238	26.5	8.0	10.7	17.1	51.6

(a) New individual dwelling units (e.g. flats, home units and villa units).

(b) From alterations and additions to residential building, conversions of non-residential building to residential building etc.

(c) Valued at \$10,000 and over. includes conversions and dwelling units approved as part of alterations and additions or as part of the construction of non-residential building.

(d) Comprises non-residential building (new plus alterations and additions) valued at \$50,000 and over.

Source: *Building Approvals, Australia* (Cat. no. 8731.0).

28

SECURED HOUSING COMMITMENTS—ORIGINAL, SEASONALLY ADJUSTED AND TREND

	Total number of dwellings(a)			Total value of commitments(b)		
	Original	Seasonally adjusted	Trend	Original	Seasonally adjusted	Trend
	no.	no.	no.	\$m	\$m	\$m
1999						
May	915	857	845	76	72	71
June	818	816	838	63	66	69
July	806	828	846	67	69	68
August	859	848	859	68	66	67
September	888	857	870	69	64	68
October	869	929	872	67	70	68
November	923	930	856	76	74	68
December	774	772	830	67	67	68
2000						
January	634	751	810	53	62	67
February	850	859	805	71	72	67
March	880	753	817	73	63	68
April	751	782	840	61	66	69
May	1 139	1 021	871	88	78	70

(a) Includes new dwellings, established dwellings and refinancing. Excludes alterations and additions.

(b) Commitment is a firm offer of housing finance. It either has been, or is normally expected to be, accepted. Includes commitments to provide housing finance to employees and commitments accepted and cancelled in the same month. Excludes alterations and additions. Includes refinancing.

Source: *Housing Finance for Owner Occupation, Australia* (Cat. no. 5609.0).

29

PRIVATE NEW CAPITAL EXPENDITURE BY TYPE OF ASSET(a)(b)

	Buildings and structures	Equipment, plant and machinery	Total
	\$m	\$m	\$m
1997–98	169	477	646
1998–99	130	345	475
1999			
March	30	85	115
June	35	89	124
September	14	83	97
December	15	98	114
2000			
March	14	74	87

(a) Estimates based on a sample survey and therefore subject to sampling variability. Covers selected industries only—mining, manufacturing, finance, property and other selected industries.

(b) Current prices.

Source: *State Estimates of Private New Capital Expenditure*, (Cat. no. 5646.0.).

	<i>Deposits</i>				
	<i>Current bearing interest</i>	<i>Current not bearing interest</i>	<i>Fixed</i>	<i>Investment savings accounts</i>	<i>Statement savings accounts</i>
	\$m	\$m	\$m	\$m	\$m
1999					
April	801	258	1 928	638	269
May	784	255	1 921	627	270
June	784	255	1 925	627	270
July	775	248	1 964	616	273
August	783	246	1 992	614	278
September	796	243	2 006	610	280
October	819	249	2 015	608	279
November	850	252	1 951	604	281
December	870	269	1 602	599	283
2000					
January	861	260	1 098	599	283
February	862	260	1 039	595	282
March	878	276	1 106	593	283
April	863	282	1 113	587	284
May	1 088	268	1 108	429	249

	<i>Deposits</i>			<i>Loans(b)</i>
	<i>Passbook/school savings accounts</i>	<i>Other</i>	<i>Total</i>	
	\$m	\$m	\$m	
1999				
April	87	92	4 073	5 029
May	93	92	4 042	5 080
June	92	92	4 044	5 107
July	77	105	4 058	5 081
August	89	93	4 093	4 765
September	78	91	4 103	4 987
October	88	84	4 143	4 972
November	87	84	4 109	4 984
December	83	84	3 792	4 962
2000				
January	83	82	3 266	4 950
February	82	82	3 202	5 039
March	81	82	3 301	5 056
April	80	83	3 292	5 021
May	54	84	3 281	5 116

(a) Details are the averages of weekly figures for each month. The figures are derived from returns submitted by banks authorised under the Banking Act together with similar returns voluntarily submitted by the State banks; they exclude the Reserve Bank.

(b) Excludes non-resident loans.

Source: Reserve Bank of Australia.

	<i>Establish- ments</i>	<i>Guest rooms</i>	<i>Bed spaces</i>	<i>Persons employed</i>	<i>Room nights occupied</i>	<i>Room occupancy rate</i>	<i>Guest nights</i>	<i>Bed occupancy rate</i>	<i>Guest arrivals</i>	<i>Takings from accommodation</i>
	<i>no.</i>	<i>no.</i>	<i>no.</i>	<i>no.</i>	<i>'000</i>	<i>no.</i>	<i>'000</i>	<i>%</i>	<i>'000</i>	<i>\$'000</i>
LICENSED HOTELS WITH FACILITIES										
1999										
March qtr	54	2 898	7 935	2 848	168.8	64.7	274.7	38.5	159.0	14 215
2000										
January	n.a.	n.a.	n.a.	n.a.	51.2	56.4	94.6	37.8	51.7	4 545
February	n.a.	n.a.	n.a.	n.a.	59.5	70.0	97.2	41.5	54.3	5 245
March	n.a.	n.a.	n.a.	n.a.	62.1	69.0	100.5	40.5	58.3	5 394
March qtr	55	2 931	8 082	3 027	172.8	65.0	292.4	39.9	164.3	15 184
MOTELS AND GUEST HOUSES WITH FACILITIES										
1999										
March qtr	51	1 749	5 431	714	104.1	66.1	204.9	41.9	118.1	8 408
2000										
January	n.a.	n.a.	n.a.	n.a.	31.2	57.7	63.1	37.6	35.1	2 766
February	n.a.	n.a.	n.a.	n.a.	33.9	66.9	62.6	39.9	34.3	2 821
March	n.a.	n.a.	n.a.	n.a.	38.3	70.7	70.6	42.1	42.6	3 042
March qtr	51	1 747	5 415	754	103.4	65.0	196.3	39.8	112.0	8 629
SERVICED APARTMENTS										
1999										
March qtr	24	865	3 321	428	54.9	70.5	124.2	41.6	61.5	5 728
2000										
January	n.a.	n.a.	n.a.	n.a.	19.4	70.3	49.3	45.1	20.4	2 179
February	n.a.	n.a.	n.a.	n.a.	18.7	72.5	39.2	38.4	17.0	1 951
March	n.a.	n.a.	n.a.	n.a.	20.6	74.3	42.2	38.7	19.2	2 104
March qtr	25	892	3 523	439	58.8	72.4	130.8	40.8	56.6	6 233
TOTAL ESTABLISHMENTS										
1999										
March qtr	129	5 512	16 687	3 990	327.8	66.1	603.9	40.2	338.6	28 351
2000										
January	n.a.	n.a.	n.a.	n.a.	101.9	59.0	207.0	39.2	107.2	9 490
February	n.a.	n.a.	n.a.	n.a.	112.1	69.4	199.1	40.3	105.5	10 017
March	n.a.	n.a.	n.a.	n.a.	120.9	70.4	213.4	40.1	120.1	10 540
March qtr	131	5 570	17 020	4 220	334.9	66.2	619.4	40.1	332.8	30 046

(a) Comprising establishments with 15 or more rooms or units. For explanation of terms and concepts refer to Tourist Accommodation, Australia (Cat. no. 8635.0).

NOTE: For the four quarters of 2000, the scope of the Survey of Tourist Accommodation (STA) has been expanded. Over this period the following accommodation sectors will be covered: hotels, motels, guest houses and serviced apartments with 15 or more rooms; holiday flats, units and houses operated by owners, managers or real estate agents who have sole letting rights to at least 15 flats, units or houses for short term letting; caravan parks with 40 or more powered sites, cabins, etc; and visitor hostels with 25 or more bed spaces.

Source: Tourist Accommodation, Australia (Cat. no. 8635.0). For more detailed information, see Tourist Accommodation, Small Area Data, Tasmania (Cat. no. 8635.6.40.001).

32

NATIONAL PARKS, PERSON ENTRIES(a)

<i>Tasmanian National Park attendance</i>							
	<i>Cradle Mountain(b) (Lake Dove)</i>	<i>Lake St Clair(b) (Cynthia Bay)</i>	<i>Freycinet(b)</i>	<i>Mt Field(b)</i>	<i>Narawntapu(c) (Bakers Beach)</i>	<i>Mole Creek Karst(d) (Marakooopa Cave)</i>	<i>Maria Island(e) (Darlington)</i>
	<i>no.</i>	<i>no.</i>	<i>no.</i>	<i>no.</i>	<i>no.</i>	<i>no.</i>	<i>no.</i>
1999–2000	200 700	111 600	308 500	130 700	33 200	29 460	13 213
1999							
May	9 000	4 700	14 200	6 500	1 500	1 656	751
June	8 000	3 000	11 900	5 000	1 400	1 530	556
July	8 100	2 700	10 400	4 900	1 300	1 040	22
August r	7 200	2 700	9 500	6 800	1 500	1 449	436
September	14 600	6 000	14 800	7 800	1 800	2 193	1 002
October	15 300	8 700	18 200	9 200	2 800	2 080	1 070
November	16 600	10 600	25 600	9 800	2 600	2 837	1 060
December	22 500	10 300	32 600	14 620	4 700	4 049	1 305
2000							
January	33 100	19 400	48 200	22 100	6 400	4 320	2 315
February	22 300	14 400	33 400	16 400	3 700	2 591	1 617
March	21 800	15 000	31 700	13 500	3 300	2 750	1 642
April	23 000	13 100	44 000	14 000	2 600	3 225	1 615
May	8 300	5 500	21 700	5 600	1 100	1 350	603
June	8 600	3 300	17 400	6 000	1 400	1 576	526

(a) A 'person entry' occurs whenever a visitor enters a National Park. Measurement occurs at the designated sites in brackets.

(b) Estimated through a combination of traffic and booth counts.

(c) Estimated through traffic counts.

(d) Number of people taken on a guided tour.

(e) The sum of ferry arrivals and estimated plane passengers.

Source: Tasmanian Parks and Wildlife Service, Department of Primary Industries, Water and Environment.

33

TRACKS IN NATIONAL PARKS, WALKER REGISTRATIONS(a)

	<i>Overland(b)</i>	<i>South Coast(c)</i>	<i>Freycinet(d)</i>	<i>Port Davey(c)</i>	<i>Frenchmans Cap</i>
	<i>no.</i>	<i>no.</i>	<i>no.</i>	<i>no.</i>	<i>no.</i>
1999–2000	p 7 339	1 011	2 784	272	807
1999					
May	111	8	57	—	30
June	69	3	97	1	18
July	r 61	2	93	—	13
August	r 28	3	119	—	16
September	r 144	10	114	2	24
October	r 215	16	196	1	22
November	r 727	56	251	10	37
December	r 1440	227	386	99	113
2000					
January	r 1518	328	587	75	218
February	r 1209	173	335	34	161
March	p 999	p 133	317	p 26	110
April	p 774	p 60	282	p 25	58
May	p 116	p 2	39	p -	15
June	p 108	p 1	65	p -	20

(a) Numbers include only walkers who registered and represented their intention.

(b) Sum of registrations at Cradle Mt and Lake St Clair.

(c) Sum of registrations to walk the length of the track in any direction, irrespective of starting point.

(d) All overnight walkers registered in the park.

Source: Tasmanian Parks and Wildlife Service, Department of Primary Industries, Water and Environment.

	Passenger vehicles	Other vehicles(b)	Total(excl. motor cycles)	Vehicles registered by vehicle rental businesses(c)	Motor cycles
	no.	no.	no.	no.	no.
1996-97	11 772	2 741	14 513	2 341	481
1997-98	13 232	2 740	15 972	2 544	542
1998-99	12 359	2 786	15 145	1 771	568
1999					
May	838	275	1 113	2	35
June	859	270	1 129	16	28
July	1 059	290	1 349	171	53
August	1 026	244	1 270	235	29
September	1 240	218	1 458	470	42
October	885	245	1 130	138	65
November	964	292	1 256	151	49
December	1 626	273	1 899	835	58
2000					
January	748	204	952	59	29
February	782	210	992	1	52
March	888	240	1 128	10	44
April	704	233	937	19	41
May	786	340	1 126	3	74

(a) Includes State and Commonwealth Government owned motor vehicles and other than those belonging to the defence services. Excludes tractors, plant and equipment, caravans and trailers.

(b) Comprises utilities, panel vans, rigid and articulated trucks and other truck type vehicles (i.e. motor vehicles designed for purposes other than freight carrying, e.g. campervans, tow trucks, ambulances and hearses) and buses.

(c) These figures are included in previous columns.

Source: New Motor Vehicle Registrations, Australia (Cat. no. 9303.0.40.003) and unpublished data.

	Trend estimates(c)							Total(d)
	Original	Food retailing	Clothing and soft good retailing	Household good retailing	Recreational good retailing	Hospitality and services		
	\$m	\$m	\$m	\$m	\$m	\$m	\$m	%
1996–97 r	3 033.0	1 295.1	179.7	335.6	185.5	457.5	3 042.5	..
1997–98 r	3 149.4	1 351.2	184.8	320.6	214.0	435.2	3 150.2	..
1998–99 r	3 170.1	1 353.0	185.2	338.2	201.1	434.5	3 177.1	..
1999								
May r	258.2	115.0	15.4	29.9	17.4	37.0	271.8	5.1
June r	253.8	115.0	15.2	29.8	17.5	37.1	271.9	5.1
July r	264.5	115.4	15.0	29.9	17.5	37.4	272.3	5.3
August r	259.3	116.1	14.7	30.1	17.6	37.7	273.0	5.7
September r	263.7	116.9	14.4	30.1	17.7	38.2	273.5	5.8
October r	272.1	117.8	14.1	29.9	17.8	38.9	273.5	5.6
November r	279.0	118.4	13.8	29.7	17.9	39.6	273.0	4.8
December r	368.9	118.5	13.6	29.6	17.8	40.4	272.2	3.5
2000								
January r	260.9	118.2	13.3	29.8	17.7	41.0	271.3	2.1
February r	257.4	117.5	13.1	30.2	17.6	41.4	270.5	0.8
March r	272.8	116.6	12.8	30.8	17.4	41.5	269.5	–0.3
April r	256.8	115.6	12.6	31.3	17.4	41.4	268.6	–1.0
May	258.2	114.6	12.4	31.7	17.3	41.0	267.7	–1.5

(a) Excludes motor vehicles, parts, petrol, etc.

(b) For April 2000, changed frame maintenance procedures have resulted in an increase in the level of retail turnover, but the increases have been phased in so that current and historical month to month movements have been limited.

(c) Trend estimates for the most recent months have been revised. See Notes on page 2. These estimates also reflect the introduction, from April 2000 reference period, concurrent seasonal adjustment, which has revised data for previous months. A detailed annual analysis of seasonal and trading day factors will continue to result in changes to the July issue each year.

(d) Includes Department stores and Other retailing.

Source: Retail Trade, Australia (Cat. no. 8501.0).

	Tasmania				Australia			
	Imports	Imports change over preceding period	Exports	Exports change over preceding period	Imports	Imports change over preceding period	Exports(b)	Exports change over preceding period
	\$m	%	\$m	%	\$m	%	\$m	%
1996-97	396	13	1 708	5	78 998	2	78 932	4
1997-98	385	-3	2 136	25	90 684	15	87 768	11
1998-99	407	6	2 019	-5	97 611	8	r 85 992	-2
1999								
May	29	0	139	-30	7 746	0	6 967	8
June	23	-22	243	75	8 142	5	r 6893	-1
July	39	75	159	-35	8 181	0	7 158	4
August	32	-19	150	-5	8 871	8	7 349	3
September	43	34	115	-23	8 965	1	7 392	1
October	32	-26	222	93	10 216	14	r 7987	8
November	33	4	155	-30	r 9 701	-5	8 471	6
December	31	-6	165	7	r 8 925	-8	8 375	-1
2000								
January	35	12	231	40	8 112	-9	r 6 815	-19
February	35	-1	186	-20	r 8 661	7	r 8 214	21
March	36	3	198	7	r 9 659	12	r 8 824	7
April	r 33	-6	r 172	r -13	r 7 966	r -18	r 8 267	-6
May	58	73	284	65	10 369	30	9 166	11

(a) It is difficult to get a complete picture of Tasmania's trade performance as imports recorded by the ABS include only goods imported directly into the State from overseas, and reported by the Australian Customs Service. Many of Tasmania's goods imported for direct consumption, or input into further processing industries, arrive via interstate ports, and are not included in this table.

(b) Includes re-exports

	European Community				East Asia				Total all countries
	United States of America	United Kingdom	Total European Community	Japan	Korea	Taiwan	Hong Kong	ASEAN(a)	
	\$'000	\$'000	\$'000	\$'000	\$'000	\$'000	\$'000	\$'000	
1996-97	117 245	166 308	299 844	467 855	64 135	93 951	100 881	364 586	1 708 322
1997-98	176 175	25 063	338 791	549 048	67 801	150 405	132 551	399 472	2 136 171
1998-99	235 787	28 691	278 037	466 626	101 177	150 071	152 533	353 441	2 019 182
1999									
May	16 130	2 544	9 143	33 234	4 965	12 897	14 322	22 457	138 931
June	13 810	1 855	76 630	58 220	12 947	13 709	13 184	30 452	243 056
July	25 199	2 834	14 114	25 878	9 485	13 917	17 716	31 017	158 655
August	13 943	792	r 5 108	41 207	7 389	16 731	18 708	25 769	r 150 059
September	11 467	916	r 6 846	28 486	7 093	14 051	9 514	19 719	r 115078
October	15 629	3 383	r 82 623	45 827	8 844	12 201	9 066	24 584	r 222 321
November	r 8 367	1 141	6 210	40 317	12 089	15 738	13 760	32 597	155 142
December	14 110	364	6 495	40 126	13 507	14 772	17 715	r 28 969	r 165 338
2000									
January	15 158	1 214	76 008	37 408	9 180	r 16 485	17 086	29 971	r 230 881
February	r 21 255	923	r 11 232	r 49 048	13 427	18 177	r 20 529	32 792	r 185 522
March	r 14 953	r 1 559	r 12 228	r 37 611	14 667	r 17 750	r 22 177	r 47 907	r 198 233
April	r 20 607	r 2 243	r 9 420	r 40 985	r 10 187	r 19 508	r 18 939	r 32 661	r 171 970
May	21 081	1 565	71 339	52 676	17 634	29 340	19 117	41 465	283 590

(a) ASEAN member countries are: Brunei, Indonesia, Laos, Malaysia, Myanmar, Philippines, Singapore, Thailand and Viet Nam.

	<i>Meat and meat preparations</i>	<i>Dairy products</i>	<i>Fish, crustaceans and molluscs</i>	<i>Vegetables and fruit</i>	<i>Wood and woodchips</i>	<i>Textile fibres and wastes</i>	<i>Metallic ores and metal scrap</i>
	\$'000	\$'000	\$'000	\$'000	\$'000	\$'000	\$'000
1996-97	55 604	110 108	121 996	36 541	241 388	38 762	184 100
1997-98	71 918	133 675	141 205	55 242	311 359	29 641	254 054
1998-99	65 026	102 709	136 268	54 907	296 164	24 999	278 001
1999							
May	6 307	7 720	9 516	10 942	22 669	475	15 242
June	7 900	8 173	9 071	4 508	33 433	715	37 755
July	6 603	3 421	14 166	3 718	17 037	1 538	19 287
August	5 650	3 053	13 590	2 568	r 31 991	891	15 297
September	5 008	2 503	14 468	1 397	19 172	2 051	12 218
October	5 330	4 256	9 240	446	r 27 681	1 111	23 997
November	5 997	4 494	12 774	442	24 706	1 604	29 618
December	7 307	3 723	16 011	422	r 23 389	3 913	28 970
2000							
January	6 296	7 366	11 677	754	r 32 062	1 460	21 075
February	r 8 375	5 680	r 11 507	r 3 066	r 32 381	1 812	13 905
March	r 9 595	7 726	r 12 696	r 8 108	r 26 189	4 519	19 224
April	r 8 834	6 555	r 9 400	r 10 797	r 35 471	1 772	r 11 029
May	10 703	9 142	13 238	9 551	31 953	592	26 793

	<i>Medical and pharmaceutical products</i>	<i>Paper and paperboard</i>	<i>Iron and steel</i>	<i>Non-ferrous metals</i>	<i>Road vehicles and transport equipment</i>	<i>Other and combined confidential items</i>	<i>Total all commodity groups</i>
	\$'000	\$'000	\$'000	\$'000	\$'000	\$'000	\$'000
1996-97	22 886	31 913	82 219	438 558	212 341	131 907	1 708 322
1997-98	34 755	21 222	76 463	557 126	280 251	169 261	2 136 171
1998-99	52 330	4 130	95 265	544 311	173 015	192 057	2 019 182
1999							
May	3 003	510	7 598	37 600	109	17 240	138 931
June	3 064	195	11 744	42 313	70 295	13 891	243 056
July	5 303	163	5 418	64 893	58	17 051	158 655
August	7 100	405	75	49 879	495	19 065	r 150 059
September	4 096	62	61	37 870	1 008	15 165	r 115 078
October	4 963	223	200	44 314	70 782	29 776	r 222 321
November	5 153	972	60	52 096	276	16 968	155 142
December	2 146	1 316	2 156	51 888	50	r 24 046	r 165 338
2000							
January	3 367	535	169	55 551	72 222	r 18 347	r 230 881
February	6 425	1 704	178	68 007	636	r 31 846	r 185 522
March	8 463	1 391	321	74 371	1 333	r 24 318	r 198 233
April	8 133	r 711	100	55 293	r 1 520	r 22 355	r 171 970
May	4 995	1 201	589	63 557	64 934	46 342	283 590

	NSW	Vic.	Qld	SA	WA	Tas.	Aust.(a)
Population							
Estimated resident population, September 1999 ('000) p	6 451.7	4 741.5	3 539.5	1 495.8	1 873.8	469.9	19 080.8
Proportion of Australian population, September 1999 (%) p	33.8	24.8	18.6	7.8	9.8	2.5	100.0
Population growth rate, 12 months to September 1999 (%) p	1.2	1.2	1.6	0.4	1.5	-0.2	1.2
Labour force							
Employment growth, 12 months to June 2000 (trend series) (%)							
Males	3.0	1.6	2.3	2.3	2.7	0.6	2.3
Females	5.9	5.0	2.4	1.0	2.8	4.3	4.1
Persons	4.3	3.0	2.3	1.7	2.8	1.5	3.1
Unemployment rate (trend series), June 2000 (%)	5.7	6.7	7.8	8.4	6.3	9.4	6.7
Unemployment growth, 12 months to June 2000 (trend series) (%)	-9.9	-9.5	0.5	1.2	-3.1	0.0	-5.4
Participation rate (trend series), June 2000 (%)	62.9	63.3	65.1	60.9	66.4	59.2	63.7
Job vacancy rate, May 2000 (%)	1.7	1.5	1.2	1.0	1.1	0.8	1.4
Working days lost through industrial disputes, 12 months to April 2000 (days per '000 employees)	126.0	122.0	39.0	43.0	86.0	5.0	93.0
Wages and prices							
Average weekly total earnings, full-time adult employees (trend series) February 2000 (\$)							
Males	929.6	839.8	807.6	813.7	906.8	799.3	873.0
Females	728.9	716.1	651.2	657.9	674.5	654.8	703.1
Persons	853.7	795.2	750.7	757.2	823.5	747.7	809.9
Average weekly total earnings, full-time adult employees, growth (trend), 12 months to Feb '00 (%)	3.5	2.7	2.1	1.6	4.3	2.2	3.1
Consumer price index, all groups, annual growth to September qtr 1999 (%) (b)	1.8	1.9	1.2	1.7	1.9	0.4	1.7
Building							
% change in the number of total dwelling units approved (original) in the 12 months ended May 2000, over the same period previous year	-1.9	24.8	10.5	28.7	16.5	32.7	11.3
May 1999 to May 2000	-9.1	-2.0	32.8	11.9	-8.3	150.5	2.5
For footnotes see end of table.							

...continued

	NSW	Vic.	Qld	SA	WA	Tas.	Aust.(a)
Private investment and retail trade							
% change in private new capital expenditure, 12 months ended March 1999, over the same period previous year (original)	-3.6	-3.6	-5.2	-12.2	-31.7	-14.9	-10.4
% change in trend estimates turnover of retail establishments, May 2000 (change from corresponding month of the previous year)	2.0	-0.1	3.1	4.4	4.6	-1.5	2.2
Transport							
% change in number of new motor vehicles (excluding motorcycles) registered in the 12 months ended May 2000, over the same period previous year	-3.8	-2.7	-15.3	-11.2	-12.1	-6.3	-7.3
Agriculture							
% change in the number of livestock slaughtered 12 months ended May 2000 over the same period previous year (original)							
Cattle and calves	-10.8	-11.0	0.4	7.7	-9.3	6.1	-5.4
Sheep and lambs	0.0	10.9	11.2	-7.3	4.6	15.7	4.4
Tourism—room occupancy rates							
Hotels, motels & guest houses, & serviced apartments with facilities, March quarter 2000 (%)	60.3	62.3	54.7	58.0	54.5	66.2	58.2
Australian National and State Accounts							
% change in Domestic (State) Final Demand(c), Chain Volume measures (trend series)							
Dec qtr 1999 to Mar qtr 2000	1.0	1.0	2.2	1.5	—	0.3	1.5
Mar qtr 1999 to Mar qtr 2000	5.5	6.3	5.3	7.0	2.2	4.1	5.7
(a) Australian totals include the ACT and NT, with the exception of Agriculture, which excludes both.							
(b) CPI applies to State capitals.							
(c) Total of four types of expenditure: Private investment, Private consumption, Government investment, Government consumption.							

	<i>Unit</i>	<i>Greater Hobart and Southern Statistical Divisions</i>	<i>Northern Statistical Division</i>	<i>Mersey-Lyell Statistical Division</i>	<i>Tasmania</i>
Area, at 30 June 1996	km ²	25 521	19 935	22 507	67 964
Population					
Estimated resident population, 30 June 1996	no.	230 187	134 047	110 209	474 443
Estimated resident population, 30 June 1999	no.	228 855	133 016	108 390	470 261
Births 1998(a)	no.	2 828	1 621	1 515	5 974
Deaths 1998(a)	no.	1 798	975	823	3 596
Labour force (original), June 2000					
Total employed	no.	96 600	59 800	43 200	199 600
Total unemployed	no.	10 200	4 500	5 500	20 200
Unemployment rate	%	9.5	7.0	11.4	9.2
Participation rate	%	59.2	59.3	59.5	59.3
Schools. 1999(b)					
Government	no.	100	57	59	216
Non-government	no.	32	17	16	65
School students, 1999(b)(c)					
Government					
Males	no.	15 529.8	9 254.0	7 867.3	32 651.1
Females	no.	14 785.4	9 291.5	7 650.5	31 727.4
Total	no.	30 315.2	18 545.5	15 517.8	64 378.5
Non-government					
Males	no.	5 866.0	2 474	2 047	10 387.4
Females	no.	6 170.8	2 375.1	1 979.7	10 525.6
Total	no.	12 036.8	4 849.1	4 027.1	20 913.0
Educational qualification, 1996 Census(d)					
Bachelor degree or higher(e)	no.	17 058	7 152	3 908	28 184
Undergraduate diploma	no.	5 893	3 268	2 181	11 374
Associate diploma	no.	3 773	1 902	1 466	7 184
Skilled vocational	no.	16 255	10 040	8 841	35 238
Basic vocational	no.	4 548	2 632	2 305	9 515
Agriculture					
Establishments with agricultural activity, 1998–99 season	no.	1 129	1 583	1 734	4 446
Total area of establishments	ha.	744 493	855 423	327 938	1 927 854
Crops, production, 1998–99 season					
Potatoes	tonnes	7 019	135 661	184 802	327 482
Onions	tonnes	949	13 527	45 996	60 471
Apples	tonnes	46 296	4 847	11 128	62 271
Barley	tonnes	8 180	19 327	2 537	30 044
Livestock, 1998–99 season					
Beef cattle	no.	77 760	191 042	222 641	491 443
Dairy cattle	no.	7 307	84 985	140 630	232 922
Sheep and lambs	no.	1 664 194	1 958 201	178 740	3 801 135
Pigs	no.	2 796	13 289	5 821	21 906
Gross value of agricultural production, 1998–99 prel.	\$m	n.y.a.	n.y.a.	n.y.a.	699
For footnotes see end of table.					...continued

	<i>Unit</i>	<i>Greater Hobart and Southern Statistical Divisions</i>	<i>Northern Statistical Division</i>	<i>Mersey-Lyell Statistical Division</i>	<i>Tasmania</i>
Business locations, September 1998					
Locations with manufacturing activity					
Less than 20 employees	no.	424	327	257	1 008
20 or more employees	no.	83	67	48	198
Total	no.	507	394	305	1 206
Locations with retail activity					
Less than 20 employees	no.	2 046	1 346	1 133	4 525
20 or more employees	no.	82	43	35	160
Total	no.	2 128	1 389	1 168	4 685
Building, 1998–99					
Total dwelling units approved	no.	731	431	248	1 410
Value of total residential building approved	\$'000	87 612	50 579	29 843	168 035
Value of total building approved	\$'000	199 614	83 883	59 083	342 580
Dwellings, Census 1996(d)					
Total dwellings	no.	98 815	57 467	45 529	201 820
Occupied private dwellings	no.	85 255	49 759	40 183	175 197
Fully owned	no.	34 338	21 563	18 359	74 260

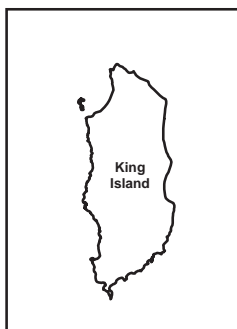
(a) Births and deaths are based on usual residence year of registration. Total Tasmania includes usual residences other than Tasmanian Statistical Divisions.

(b) Source: DETYA and Tasmanian Department of Education.

(c) Full-time equivalent.

(d) Total includes migratory statistical division.

(e) Includes higher degree, postgraduate diploma and bachelor degree.



Statistical Divisions

Statistical Division NORTHERN
 Local Government Area Dorset



Based on ASGC 1996
 Prepared by: Demography Section, ABS Hobart
 © Commonwealth of Australia, 1998

FOR MORE INFORMATION...

- INTERNET** www.abs.gov.au the ABS web site is the best place to start for access to summary data from our latest publications, information about the ABS, advice about upcoming releases, our catalogue, and Australia Now—a statistical profile.
- LIBRARY** A range of ABS publications is available from public and tertiary libraries Australia-wide. Contact your nearest library to determine whether it has the ABS statistics you require, or visit our web site for a list of libraries.
- CPI INFOLINE** For current and historical Consumer Price Index data, call 1902 981 074 (call cost 77c per minute).
- DIAL-A-STATISTIC** For the latest figures for National Accounts, Balance of Payments, Labour Force, Average Weekly Earnings, Estimated Resident Population and the Consumer Price Index call 1900 986 400 (call cost 77c per minute).

INFORMATION SERVICE

Data which have been published and can be provided within five minutes are free of charge. Our information consultants can also help you to access the full range of ABS information—ABS user-pays services can be tailored to your needs, time frame and budget. Publications may be purchased. Specialists are on hand to help you with analytical or methodological advice.

- PHONE** **1300 135 070**
- EMAIL** **client.services@abs.gov.au**
- FAX** 1300 135 211
- POST** Client Services, ABS, GPO Box 796, Sydney 1041

WHY NOT SUBSCRIBE?

ABS subscription services provide regular, convenient and prompt deliveries of ABS publications and products as they are released. Email delivery of monthly and quarterly publications is available.

- PHONE** 1300 366 323
- EMAIL** subscriptions@abs.gov.au
- FAX** 03 9615 7848
- POST** Subscription Services, ABS, GPO Box 2796Y, Melbourne 3001



2130360008007
ISSN 1034-1803

RRP \$19.50